

# MAGAIN



## 31 Sheidow Terrace Marino SA

3 1 2

Set in the tightly held seaside enclave of Marino, this architecturally designed residence delivers a rare opportunity to secure an elevated coastal sanctuary on an expansive 943sqm allotment. With approximately 187sqm of beautifully crafted living space and breathtaking views stretching over Marino and along the coastline to Port Adelaide, this is a home where lifestyle and long-term opportunity unite.

Designed to capture the ever-changing seascape, the home frames spectacular sunsets, rolling storm fronts and endless ocean blues from its elevated vantage point. The generous timber deck provides the perfect platform to relax, entertain and soak in those sensational coastal panoramas.

Inside, warmth and comfort meet thoughtful design.

[For full version visit the website](https://www.magain.com.au/property/31-sheidow-terrace-marino-sa/8626425)

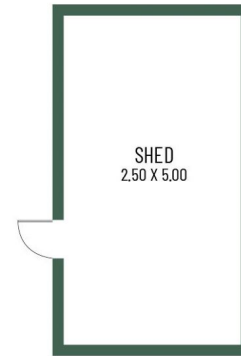
**Type** : House  
**Price** : Contact Agent  
**Building Size** : 175 sqm  
**Land Size** : 943 sqm  
**View** : <https://www.magain.com.au/property/31-sheidow-terrace-marino-sa/8626425>



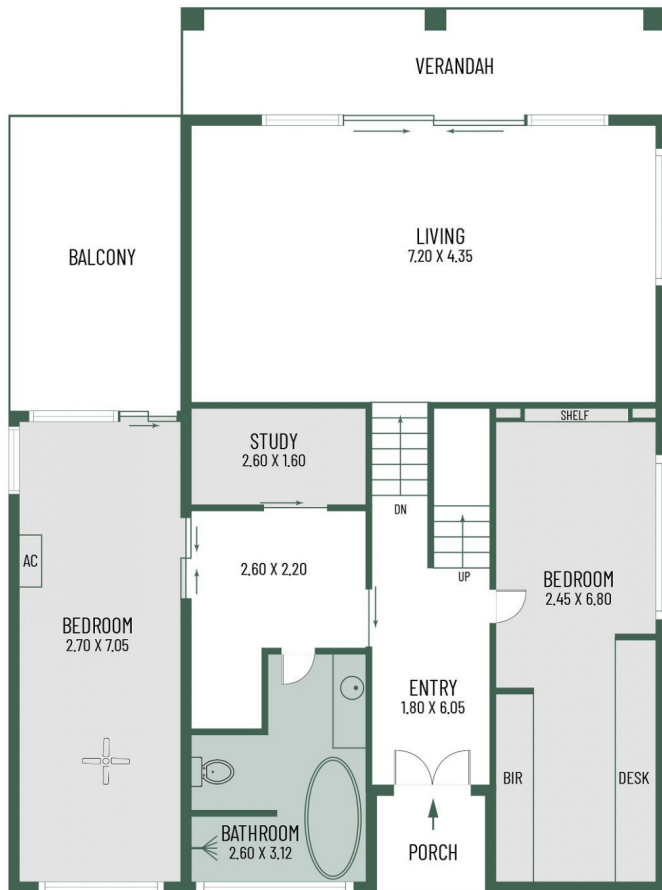
**Lindy Kriticos**  
08 8381 6000



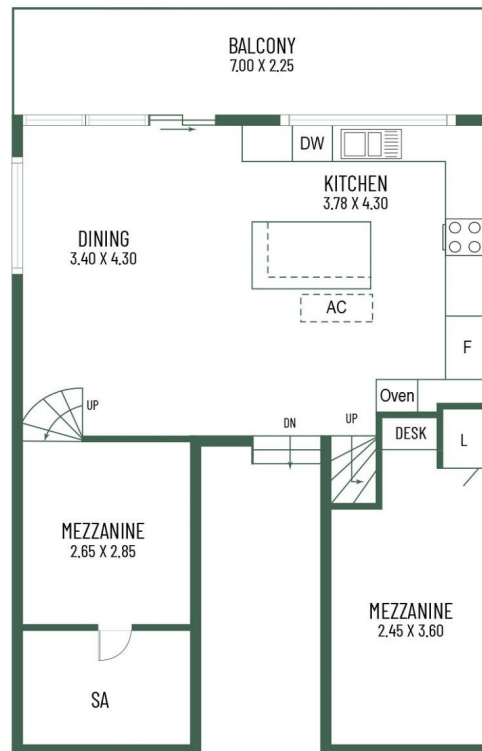
"NOT IN POSITION"



(NOT IN POSITION)



Ground Floor



First Floor

| Approximate Areas |                   |
|-------------------|-------------------|
| Internal Area     | 145m <sup>2</sup> |
| External Area     | 60m <sup>2</sup>  |
| Total Area        | 205m <sup>2</sup> |

Every precaution has been taken to verify the accuracy of the above details. However all dimensions are approximate and no liability be accepted. Interested parties should make and rely on their own inquiries. Floor plan by Sabine Verhack Photography

**31 Sheidow Tce,  
Marino SA**