

MAGAIN



8 CLAUDIA STREET CHRISTIE DOWNS

Scale in metres. This drawing is for illustration purposes only.
All measurements are approximate and details intended to be relied upon should be independently verified.

8 Claudia Street Christie Downs SA

3 1 2

Please contact Scott McPharlin from Magain Real Estate for all your property advice.

This little 3 bedder is set on a big block of around 704m². There's huge development potential here (STCC), with a home that could easily be tidied up to rent out until you're ready for your next move.

- *Zoned Housing Diversity Neighbourhood
- *Fairly level block with 21.1m frontage
- *3-bedroom home with good undercover parking
- *No significant trees

The location is excellent, being handy to arterial roads including the Southern Expressway and Main South Road, means easy access to the city. A few minutes' drive will take you to all the local amenities you could ever need, including the fantastic Colonnades Shopping Centre. The beach is only a short distance away too, as are great options for schools and public transport.

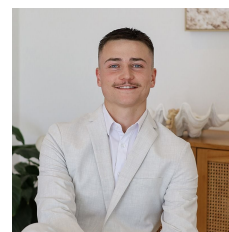
All floorplans, photos and text are for illustration purposes only and are not intended to be part of any contract. All measurements are approximate and details intended to be relied upon should be independently verified (RLA)

[For full version visit the website](https://www.magain.com.au)

Type : House
Price : \$ 775,000
Land Size : 704 sqm
View : <https://www.magain.com.au/property/8-claudia-street-christie-downs-sa/8636056>



Scott McPharlin
08 8382 0029



Patrick Chay
08 8382 0029