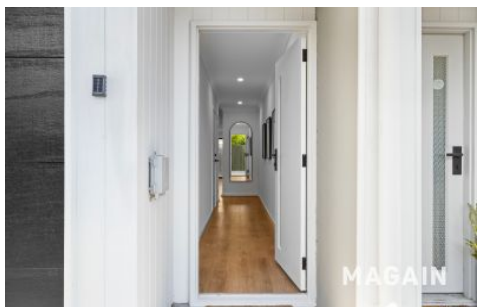


# MAGAIN



4/476 Morphett Road Warradale SA

2  1  1 

Please contact Sandy Robinson from Magain Real Estate for all your property advice.

Set back from the street yet positioned in an exceptionally convenient location, this modern and beautifully maintained residence forms part of a quality group built in 2022.

Directly opposite Westfield Marion, the lifestyle convenience here is undeniable - quite literally everything you need is at your doorstep. From shopping and dining to health services and public transport, you may find yourself leaving the car parked more often than not.

Thoughtfully designed across two levels, the home delivers light-filled interiors, contemporary finishes and private

**Type** : Townhouse

**Price** : \$ 726,000

**View** : <https://www.magain.com.au/property/4476-morphett-road-warradale-sa/8641718>

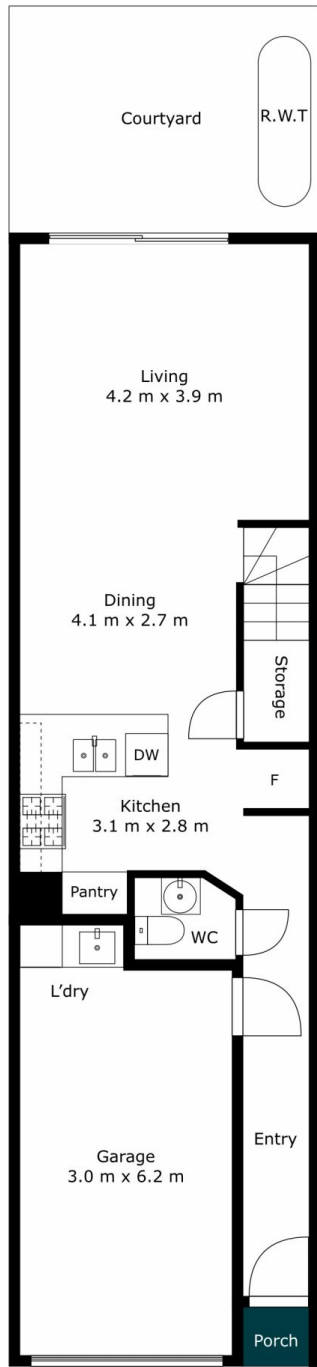


**Sandy Robinson**  
08 8398 1494

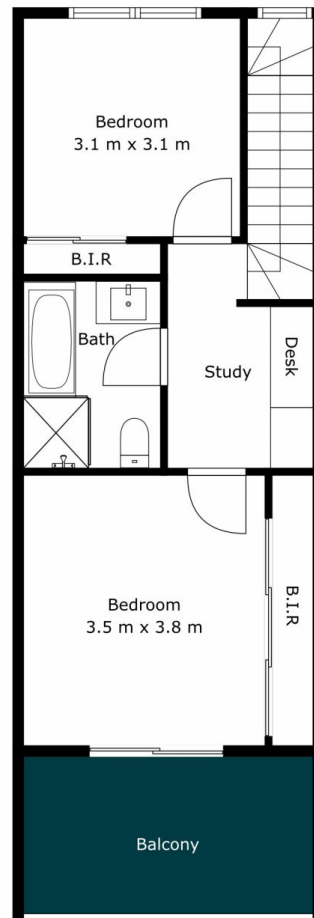
[For full version visit the website](https://www.magain.com.au)

<https://www.magain.com.au>  
Magain Real Estate

T17, 525 Brighton Road Brighton SA  
08 8398 1494



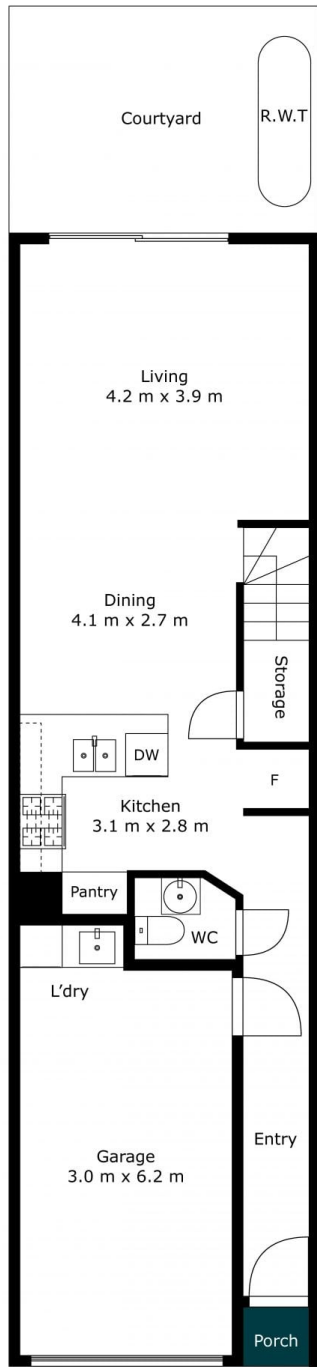
Basement 1



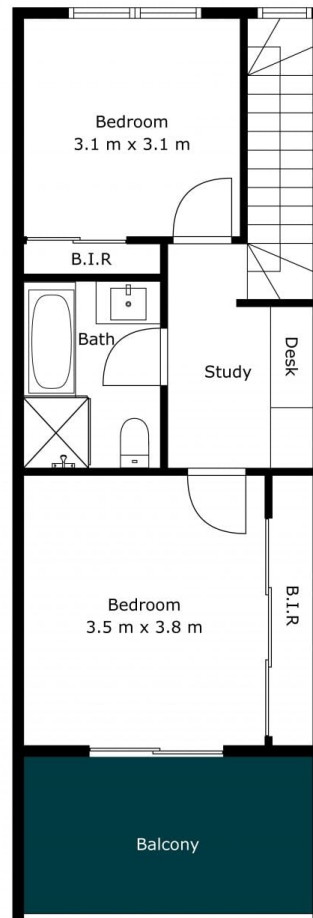
1st Floor

Internal (inc garage)	115	SQM
External	10	SQM
<b>Total Approx</b>	<b>125</b>	<b>SQM</b>





Basement 1



1st Floor

Internal (inc garage)	115	SQM
External	10	SQM
<b>Total Approx</b>	<b>125</b>	<b>SQM</b>

