

# MAGAIN



## 20 Mann Street Seacliff Park SA

3 1 2

Please contact Sandy Robinson from Magain Real Estate for all your property advice.

1690sqm of Land with Approx. 35m Frontage - Renovate, Extend or Explore Development Potential (STCC)

It is not often that a landholding of this scale becomes available in Seacliff Park - and rarer still when it enjoys a position bordering Gilbertson Gully Reserve.

Set on an expansive 1690sqm allotment with an approximate 35m frontage and a significant portion of usable flat land, this is a property that invites big thinking. Whether you are searching for a family home to renovate and enjoy, or considering the future potential for four or

[For full version visit the website](https://www.magain.com.au/property/20-mann-street-seacliff-park-sa/8641720)

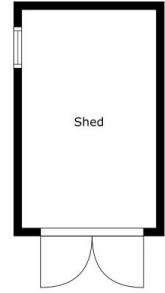
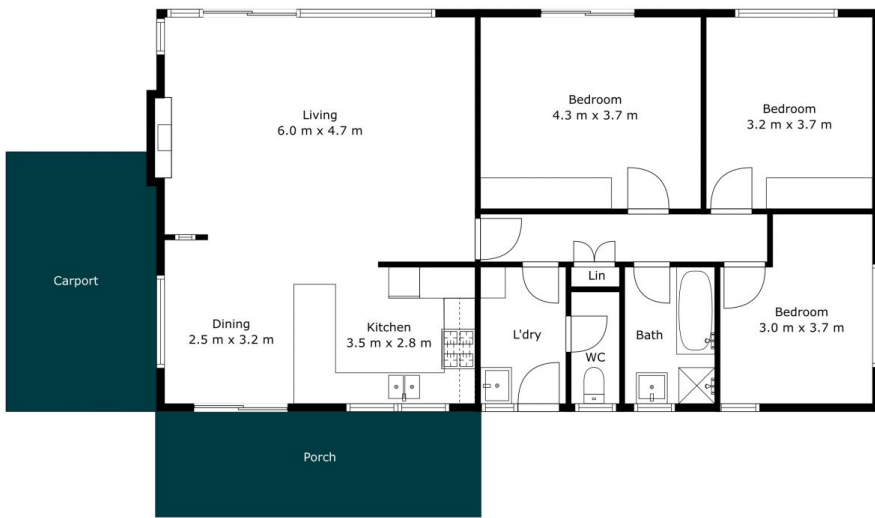
**Type** : House  
**Price** : \$ 1,060,000  
**Building Size** : 120 sqm  
**Land Size** : 1690 sqm  
**View** : <https://www.magain.com.au/property/20-mann-street-seacliff-park-sa/8641720>



**Sandy Robinson**  
08 8398 1494

<https://www.magain.com.au>  
Magain Real Estate

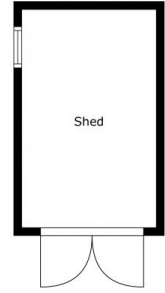
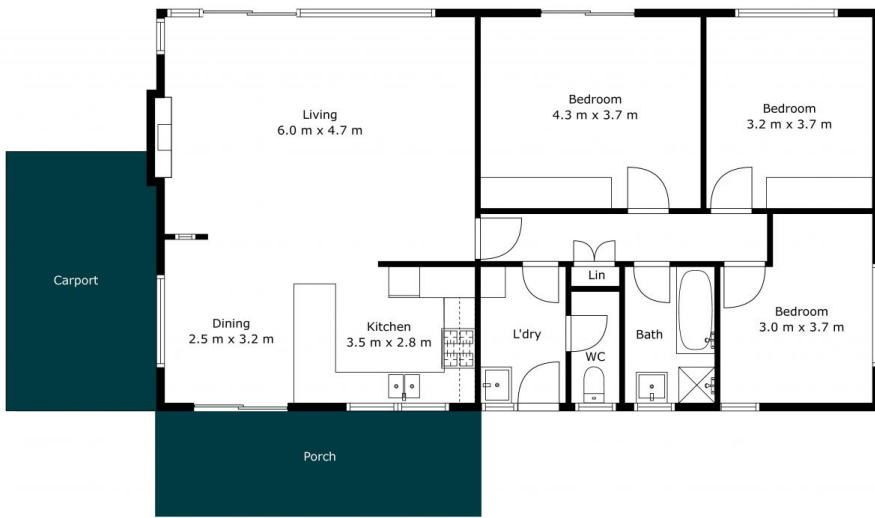
T17, 525 Brighton Road Brighton SA  
08 8398 1494



Internal	112 SQM
External <small>(inc. carport)</small>	40 SQM
<b>Total Approx</b>	<b>152 SQM</b>



Scale In Metres. This Drawing Is For Illustration Purposes Only. All Measurements Are Approximate And Details Intended To Be Relied Upon Should Be Independently Verified. All Measurements Are Approximate.



Internal	112 SQM
External <small>(inc. carport)</small>	40 SQM
<b>Total Approx</b>	<b>152 SQM</b>



Scale In Metres. This Drawing Is For Illustration Purposes Only. All Measurements Are Approximate And Details Intended To Be Relied Upon Should Be Independently Verified. All Measurements Are Approximate.