

# MAGAIN



82 Mast Avenue Seaford Meadows SA

5  3  2 

Please contact Jemma Turner or Jacqui Wehrmann from Magain Real Estate for all your property advice.

Spacious, versatile, and designed for modern family living, 82 Mast Avenue offers generous proportions across a well-considered two-storey floorplan in the suburb of Seaford Meadows. Set on approximately 420sqm, the home delivers five bedrooms, three bathrooms, multiple living zones, and a wider-than-standard double garage.

The heart of the home is the light-filled open plan kitchen, meals, and dining area, creating a welcoming space for everyday living and entertaining. The well-appointed kitchen features stone benchtops, quality Smeg appliances, ample cabinetry, and a butler's pantry that provides

[For full version visit the website](https://www.magain.com.au/property/82-mast-avenue-seaford-meadows-sa/8642424)

**Type** : House  
**Price** : \$ 1,140,000  
**Building Size** : 286 sqm  
**Land Size** : 420 sqm  
**View** : <https://www.magain.com.au/property/82-mast-avenue-seaford-meadows-sa/8642424>



**Jemma Turner**  
08 8366 2230

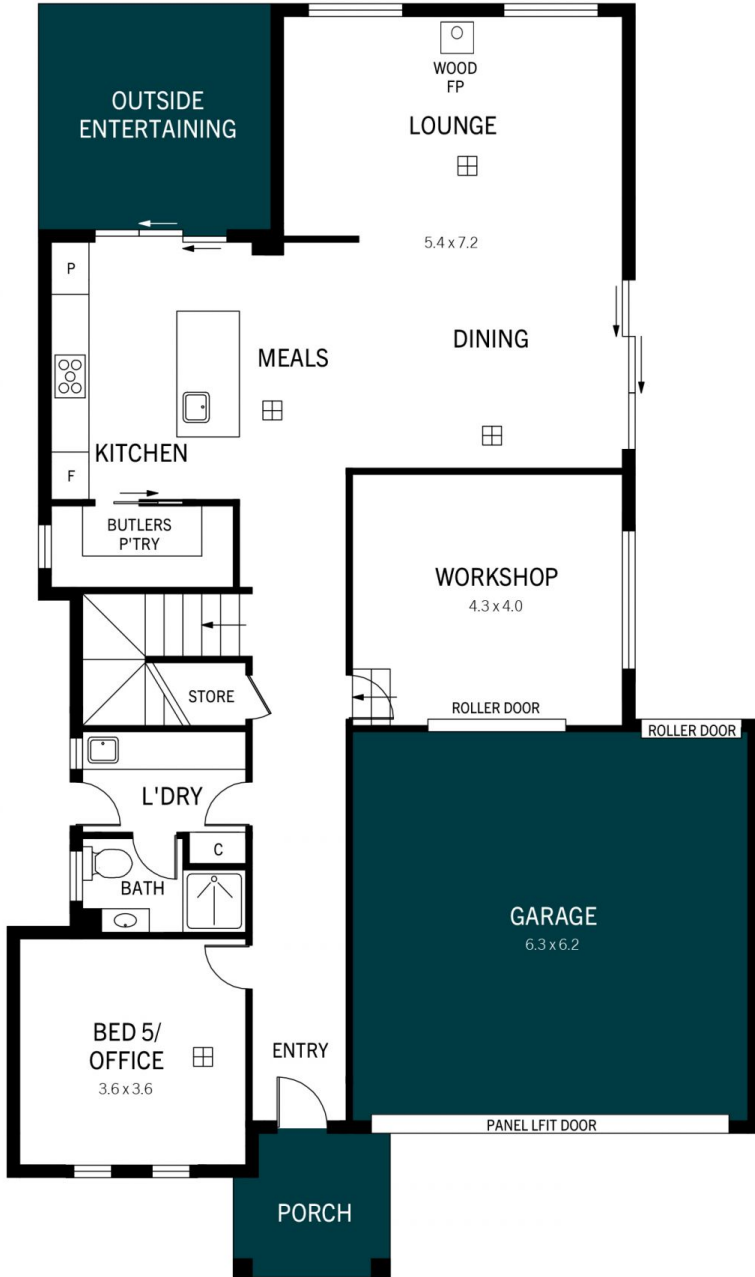


**Jacqui Wehrmann**  
08 8366 2230

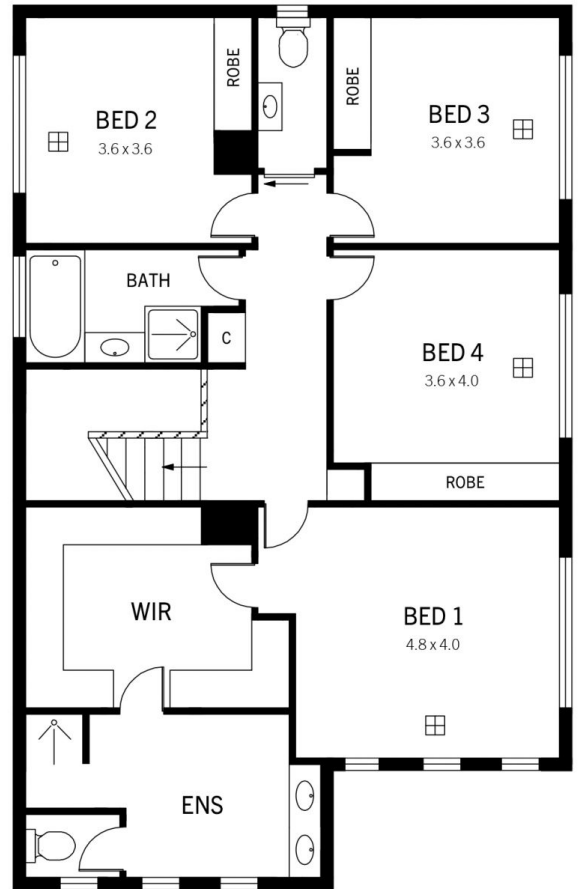
<https://www.magain.com.au>  
Magain Real Estate

PO Box 18 Aldinga Beach SA  
08 8366 2230

SHED



GROUND LEVEL



FIRST LEVEL

## 82 Mast Avenue, Seaford Meadows

DISCLAIMER: Floorplan and area calculation are approximate and for illustration purposes only.

Produced by **Property Portraits**

# MAGAIN