

MAGAIN



8 Slater Avenue Mount Compass SA

5 2 2

Please contact David Hams from Magain Real Estate for all your property advice.

Located in the heart of the fantastic Fleurieu Peninsula, this feature packed property could be ideal for a range of different buyers.

Positioned on a generously sized 1,000m2 allotment in the centre of the Mt Compass township, this tastefully updated home boasts five bedrooms, separate living areas, fabulous outdoor entertaining and direct drive-in access to a large powered garage/workshop.

Originally built in 1991, but extended and renovated in 2024, this Sarah Built home is sure to impress. The front

[For full version visit the website](https://www.magain.com.au)

Type : House
Price : \$ 835,000
Building Size : 176 sqm
Land Size : 1000 sqm
View : <https://www.magain.com.au/property/8-slater-avenue-mount-compass-sa/8646001>



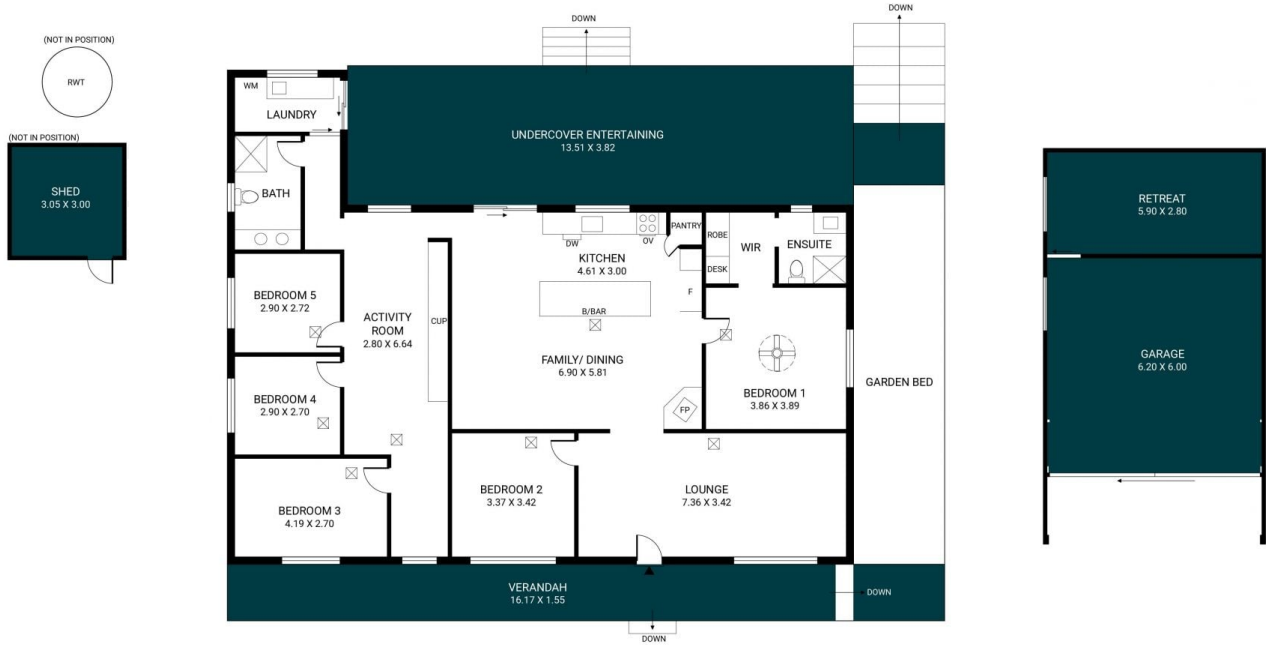
David Hams
08 8366 2230



Mitch Portlock
08 8366 2230

<https://www.magain.com.au>
Magain Real Estate

Shop 60, Seaford Central Shopping Centre, Commercial Road
08 8366 2230



Scale in metres. This drawing is for illustration purposes only. All measurements are approximate and details intended to be relied upon should be independently verified.

Produced by The Fotobase Group