

# MAGAIN



## 20 Thompson Circuit Evanston Park SA

4  2  2 

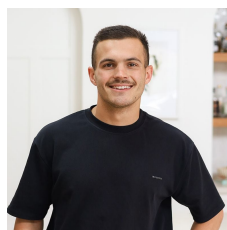
Step into a home where every detail has been thoughtfully upgraded, beautifully maintained, and designed for effortless living.

Set among meticulously manicured gardens, this move in ready residence blends modern comfort with timeless style, offering exceptional indoor and outdoor spaces for families, entertainers, and anyone seeking a high quality lifestyle.

Inside, you're welcomed by 9ft ceilings that enhance the sense of space, complemented by multiple climate control options including evaporative cooling, reverse cycle split systems to the living area and bedroom 3, and a combustion heater for cosy winter nights. Ceiling fans feature throughout the main bedroom, lounge, activity

[For full version visit the website](https://www.magain.com.au/property/20-thompson-circuit-evanston-park-sa/8667289)

**Type** : House  
**Price** : \$899k to \$959k  
**Land Size** : 702 sqm  
**View** : <https://www.magain.com.au/property/20-thompson-circuit-evanston-park-sa/8667289>



**Bailey Fielke**  
08 8522 2715



**Grant Fielke**  
08 8522 2715

20 Thompson Circuit,  
**EVANSTON PARK**



Living:	185.00SQ.M
Garage:	35.00SQ.M
Verandah:	43.75SQ.M
Shed:	15.76SQ.M
<b>TOTAL:</b>	<b>279.51SQ.M</b>

This drawing is for illustration purposes only. All measurements are internal and approximate. Details intended to be relied upon should be independently verified.

