

MAGAIN



3/35 Panalatinga Road Woodcroft SA

3  1  1 

Positioned in a sought after pocket of Woodcroft, this well designed semi-detached home built in 2013 breaks the mould, offering an impressive sense of space with three bedrooms and multiple living zones. Whether you're a growing family, first home buyer or savvy investor, this home presents an outstanding opportunity in a convenient, lifestyle focused location.

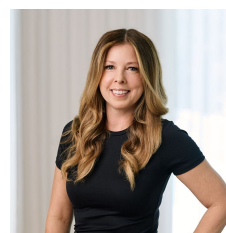
Upon entry, you're welcomed by the first of two living areas - a comfortable and inviting space, complete with ducted reverse cycle heating and cooling, perfect for relaxing and unwinding after a long day. Moving through the home, you'll find the expansive open plan family room at the rear, designed for modern living. With sliding glass doors leading to the outdoor entertaining area, this space seamlessly

Type : House
Price : \$695k - \$745k
Building Size : 126 sqm
Land Size : 252 sqm
View : <https://www.magain.com.au/property/33-5-panalatinga-road-woodcroft-sa/86674-74>

[For full version visit the website](#)



Baz Rampal
08 8381 6000



Zoe Ball
08 8381 6000

<https://www.magain.com.au>
Magain Real Estate

Shop 15, Woodcroft Market Plaza, 217 Pimpala Road W
08 8381 6000



Scale in metres. This drawing is for illustration purposes only. All measurements are approximate and details intended to be relied upon should be independently verified.

Produced by **The Fotobase Group**