

MAGAIN



5 Aboyne Avenue Seacliff Park SA

3 1

Positioned in one of Seacliff Park's most tightly held and whisper-quiet pockets, this 1959 solid-brick classic sits proudly on a prime corner allotment with rare sea glimpses and even rarer potential. Whether you're dreaming big, developing smart, or searching for the perfect coastal canvas, this address delivers the kind of opportunity buyers wait years to find. With beaches, cafés, transport, universities, hospitals, and major shopping hubs all moments away, this is a location where lifestyle and long-term value collide.

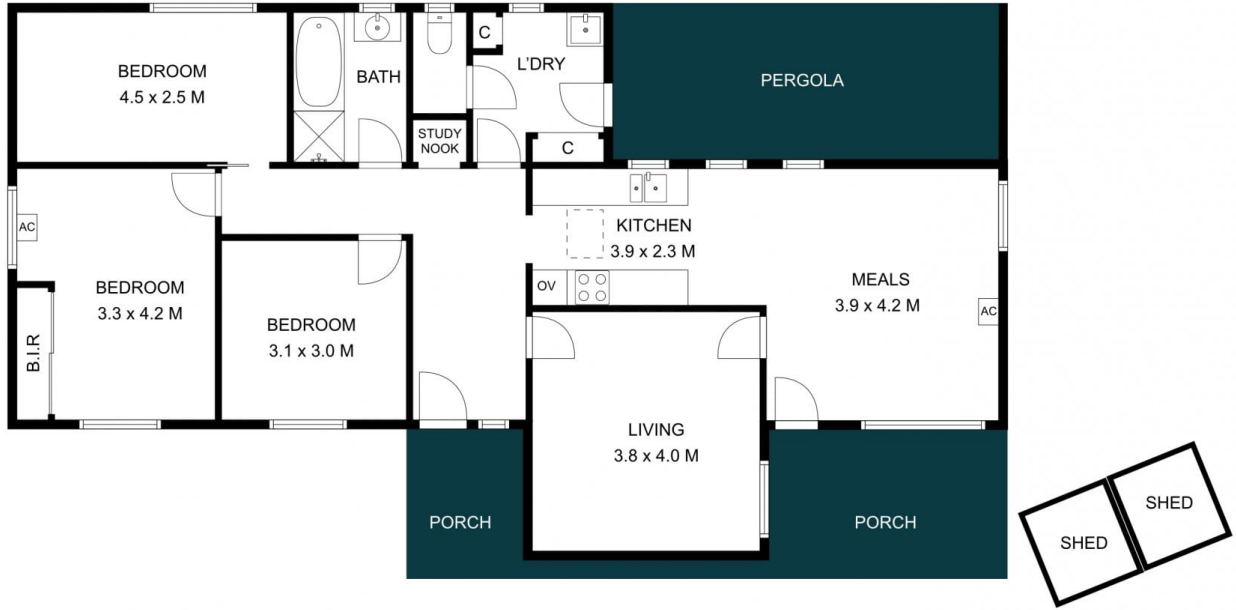
Type : House
Price : Auction - Friday 1st May 4pm (USP)
Building Size : 125 sqm
Land Size : 654 sqm
View : <https://www.magain.com.au/property/5-a-boyne-avenue-seacliff-park-sa/8673356>



Nathan Brown
08 8398 1494



Lincoln Rogers
08 8398 1494



Internal (inc garage)	104 SQM
External	42 SQM
Total Approx	146 SQM

Scale in metres. This drawing is for illustration purposes only.
 All measurements are approximate and details intended to be relied upon should be independently verified.

