

MAGAIN



6B Lincoln Avenue Warradale SA

4 🛏 2 🚿 3 🚗

Designed for the way families live today, this Simonds-built home combines refined finishes with a practical, flexible layout in one of Warradale's most tightly held pockets.

From its striking street presence-defined by clean architectural lines, a raised portico and exposed aggregate driveway-you know this is a home that delivers more than the standard.

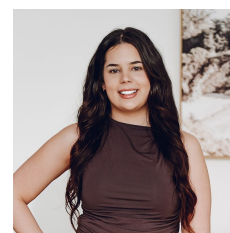
Step inside and the tone is immediate: warm timber floors, natural light and a layout that simply makes sense. The master suite is privately positioned at the front, offering a true parents' retreat with plantation shutters, walk-through robe and a beautifully finished ensuite with full-height tiling and timber accents.

[For full version visit the website](#)

Type : House
Price : Offers Close Tue 5th May @ 12 noon (USP)
Building Size : 211 sqm
Land Size : 386 sqm
View : <https://www.magain.com.au/property/6b-lincoln-avenue-warradale-sa/8679650>



Sandy Robinson
08 8398 1494



Nina Bartholomew
08 8398 1494

<https://www.magain.com.au>
Magain Real Estate

T17, 525 Brighton Road Brighton SA
08 8398 1494



Internal (inc garage)	191	SQM
External	20	SQM
Total Approx	211	SQM

Scale in metres. This drawing is for illustration purposes only.
 All measurements are approximate and details intended to be relied upon should be independently verified.