




MAGAIN



51 Rosella Street Encounter Bay SA

2  2  3 

Perfectly positioned in the sought-after coastal pocket of Encounter Bay, 51 Rosella Street presents an exceptional opportunity to secure a near-new Oakford home designed for effortless living. Set on a generous 472m² corner allotment, this thoughtfully designed residence offers flexibility and comfort, featuring two spacious bedrooms, two bathrooms, and two separate living areas.

The front living area was originally designed as a third bedroom and can be converted back to a third bedroom if needed, this provides versatility to suit your needs. The heart of the home showcases a stylish kitchen complete with stone benchtops and quality Westinghouse appliances, flowing seamlessly into the open-plan living and dining area. Modern polished concrete floors enhance

Type : House
Price : \$799K - \$849K
Land Size : 472 sqm
View : <https://www.magain.com.au/property/51-rosella-street-encounter-bay-sa/8680433>

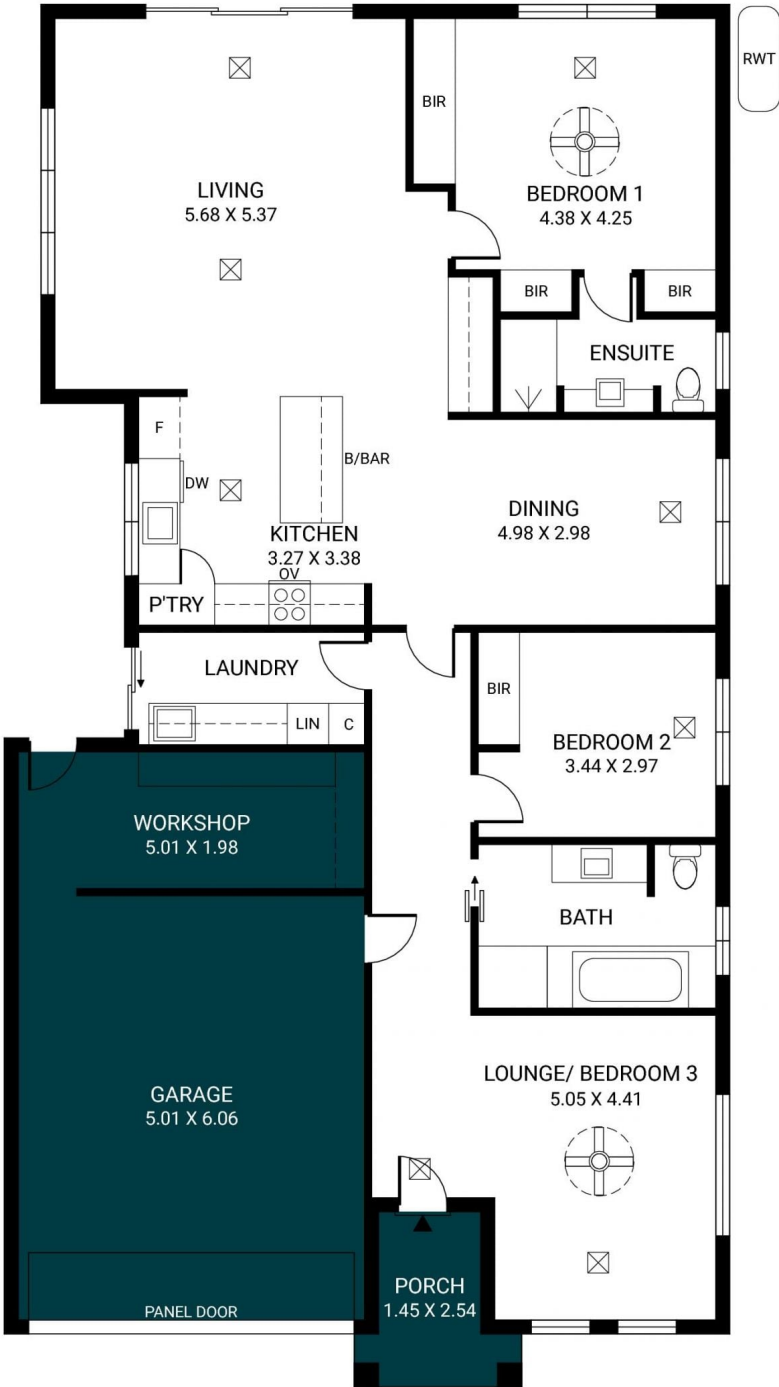


Steven Weinert
08 8382 0029

[For full version visit the website](https://www.magain.com.au)

<https://www.magain.com.au>
Magain Real Estate

Shop 2, 32 Saltfleet Street Port Noarlunga SA
08 8382 0029



Scale in metres. This drawing is for illustration purposes only. All measurements are approximate and details intended to be relied upon should be independently verified.