




MAGAIN



49 Addison Road Warradale SA

6  2  2 

Custom built in 2023, this refined dual-level residence delivers a seamless fusion of architectural presence, considered design and enduring quality-offering the strength of steel frame construction, complemented by a lifetime structural guarantee.

Positioned within a tightly held and well-connected pocket of Warradale, the home has been meticulously crafted to balance scale, light and liveability. A very rare six-bedroom offering, enhanced by two generous living areas and flexible accommodation, it responds effortlessly to the evolving needs of modern families while maintaining a calm, sophisticated aesthetic throughout.

A striking natural timber entry with keyless access sets the

[For full version visit the website](https://www.magain.com.au)

Type : House
Price : Offers Close 6th May @ 9am (USP)
Building Size : 257 sqm
Land Size : 287 sqm
View : <https://www.magain.com.au/property/49-addison-road-warradale-sa/8681584>



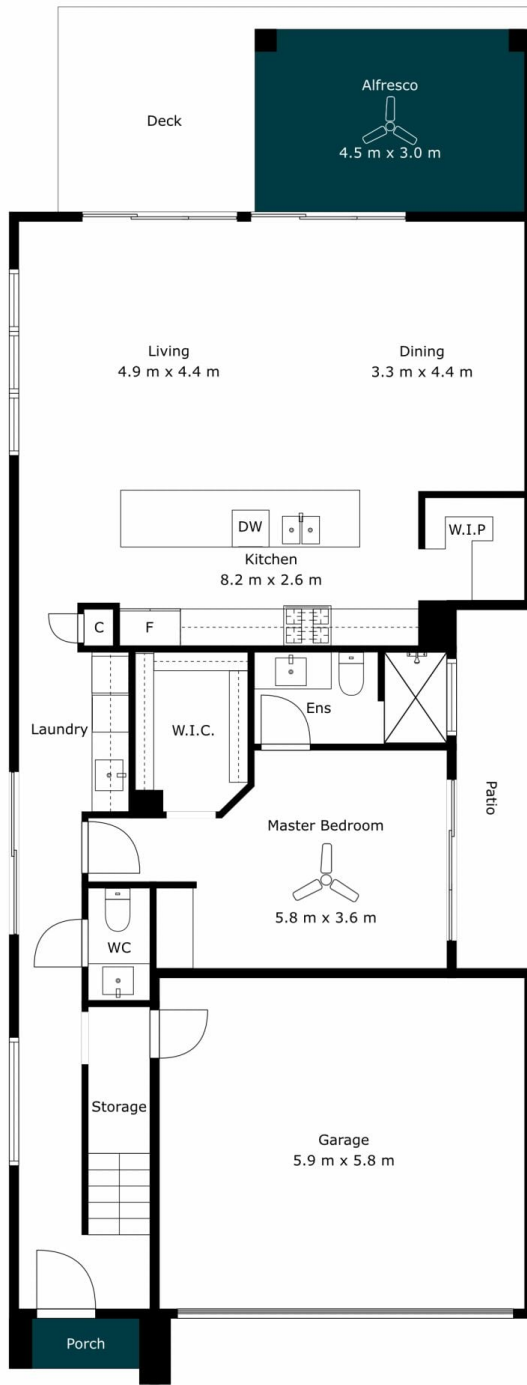
Sandy Robinson
08 8398 1494



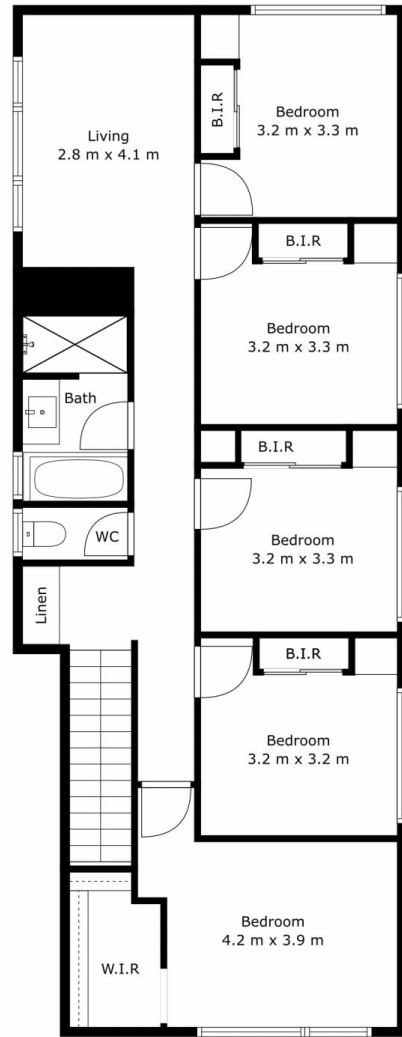
Nina Bartholomew
08 8398 1494

<https://www.magain.com.au>
Magain Real Estate

T17, 525 Brighton Road Brighton SA
08 8398 1494



1st Floor



2nd Floor

Internal (inc garage)	257	SQM
External	15	SQM
Total Approx	272	SQM



Scale In Metres. This Drawing Is For Illustration Purposes Only.
 All Measurements Are Approximate And Details Intended To Be Relied Upon Should Be Independently Verified. All Measurements Are Approximate.