

MAGAIN



1, 2 & 3/32 Woodswallow Drive Happy Valley SA

Set in one of Happy Valley's most peaceful, tree-lined pockets, this brand-new house and land packages on Woodswallow Drive places you right in the heart of a suburb buyers can't get enough of. With the stunning Happy Valley Reservoir Reserve just moments away for kayaking, walking trails and weekend picnics, plus easy access to quality schools, major shopping hubs, and the Southern Expressway, this location blends lifestyle and convenience in a way few areas can match. Add in leafy streets, a strong family community, and a quiet, tucked-away position - and you've found a hidden gem that's rarely offered at this price point.

3 2 1

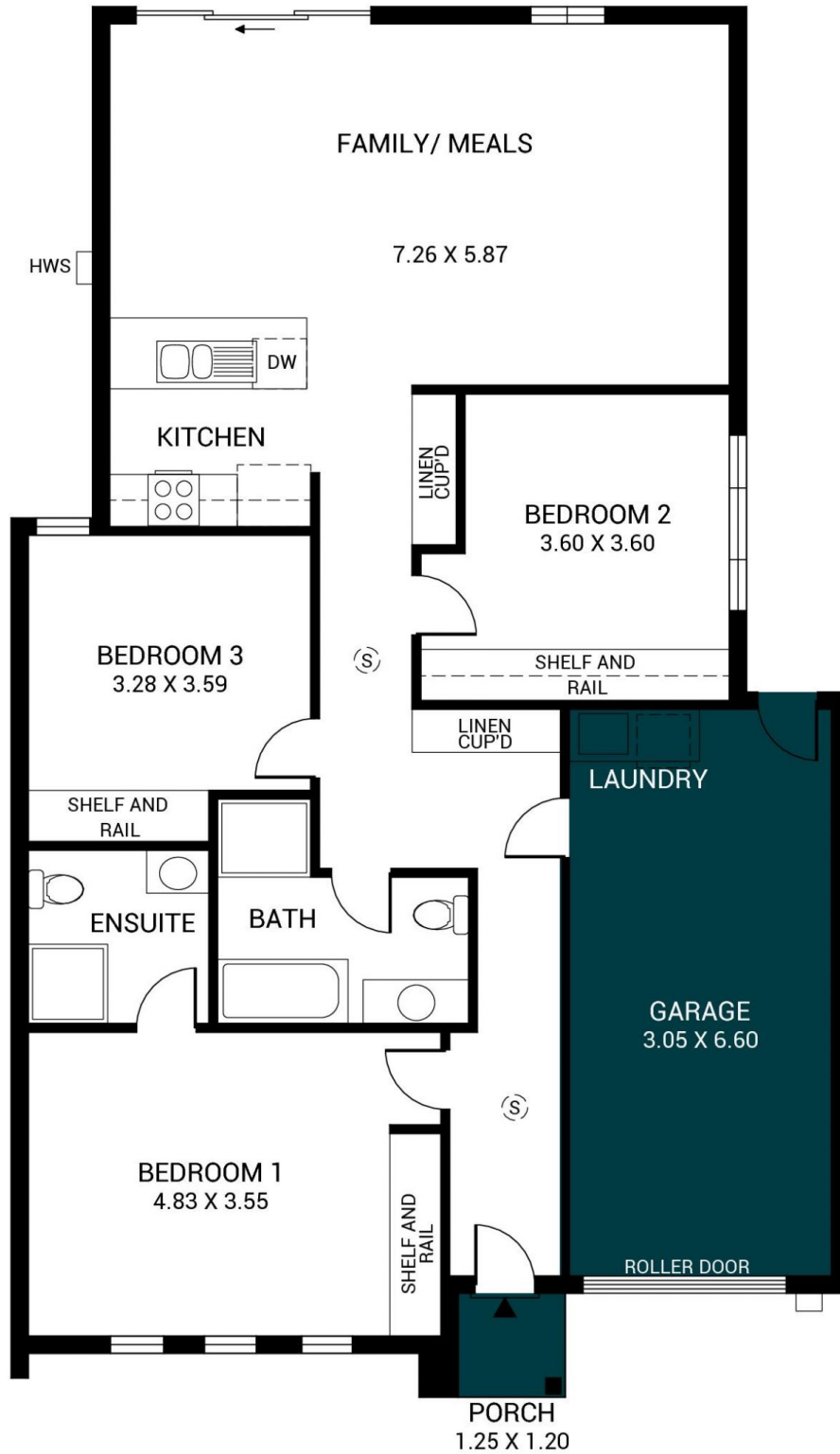
Type : House
Price : \$789k
Land Size : 258.04 sqm
View : <https://www.magain.com.au/property/1,-2-3-32-woodswallow-drive-happy-valley-sa/8683887>



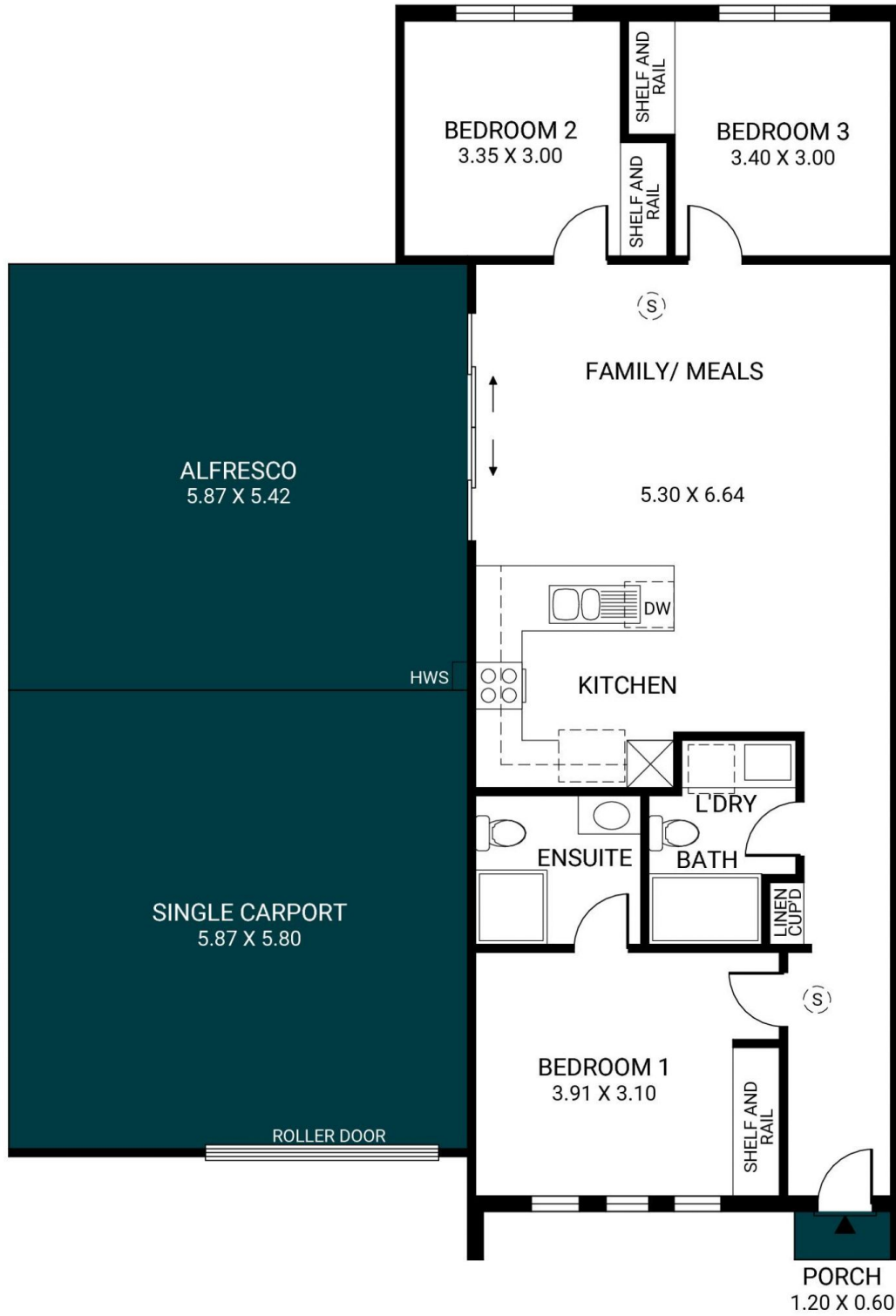
Nathan Brown
08 8398 1494



Lincoln Rogers
08 8398 1494



Scale in metres. This drawing is for illustration purposes only. All measurements are approximate and details intended to be relied upon should be independently verified. Produced by **The Fotobase Group**



Scale in metres. This drawing is for illustration purposes only. All measurements are approximate and details intended to be relied upon should be independently verified. Produced by **The Fotobase Group**