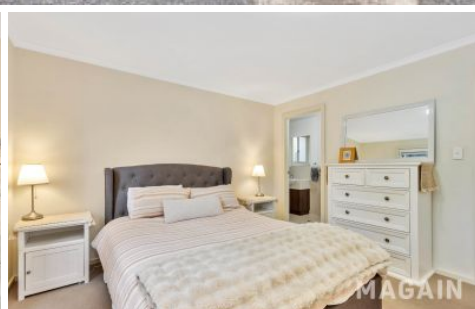


# MAGAIN



## 25E Greening Drive Evanston Park SA

3  2  2 

Positioned in the sought-after suburb of Evanston Park, this well-designed home offers comfort, functionality, and modern living. Boasting a spacious open-plan layout, the home seamlessly connects the lounge, dining, and kitchen areas-perfect for both everyday living and entertaining.

The kitchen is well-equipped with a dishwasher and a generous walk-in pantry, providing ample storage and convenience for the home chef. Climate control is taken care of with zoned ducted reverse cycle air conditioning, ensuring year-round comfort.

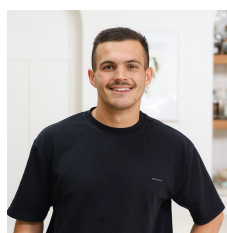
The master bedroom is a private retreat, complete with a built-in wardrobe, ensuite, and blackout blinds for added comfort and privacy.

[For full version visit the website](https://www.magain.com.au/property/25e-greening-drive-evanston-park-sa/8685276)

**Type** : House

**Price** : CONTACT AGENT

**View** : <https://www.magain.com.au/property/25e-greening-drive-evanston-park-sa/8685276>



**Bailey Fielke**  
08 8522 2715



**Grant Fielke**  
08 8522 2715