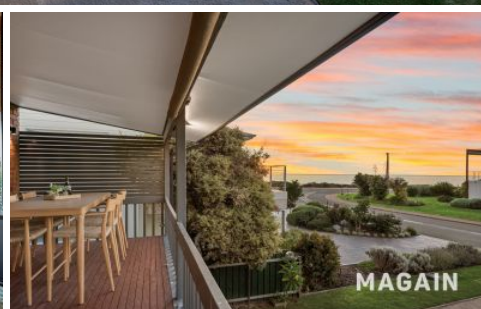


MAGAIN



4 Zephyr Terrace Port Willunga SA

4 🛏 1 🚿 4 🚗

Positioned in the tightly held coastal enclave of Port Willunga, 4 Zephyr Terrace presents a rare opportunity to secure a much loved north-facing home just moments from the shoreline, where ocean views and an enviable seaside lifestyle come together. Held by the one family for years, this is a place where lasting memories have been made, all while enjoying the beauty and character that make Port Willunga so sought after. Set back from the Esplanade yet close enough to hear the ocean and feel the sea breeze, it offers the perfect balance of privacy and connection to the coast.

Spanning two levels, the home has been thoughtfully designed to maximise both space and its elevated outlook. Upstairs, the heart of the home unfolds with a light-filled

[For full version visit the website](https://www.magain.com.au/property/4-zephyr-terrace-port-willunga-sa/8691154)

Type : House
Price : \$1.8M - \$1.98M
Building Size : 195 sqm
Land Size : 698 sqm
View : <https://www.magain.com.au/property/4-zephyr-terrace-port-willunga-sa/8691154>



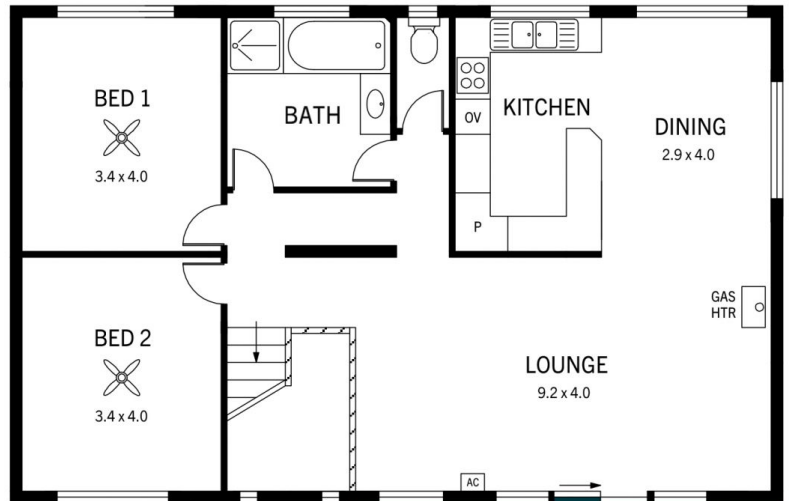
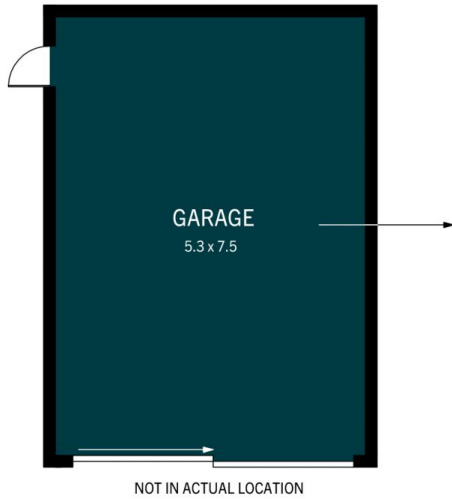
Jemma Turner
08 8366 2230



Jacqui Wehrmann
08 8366 2230

<https://www.magain.com.au>
Magain Real Estate

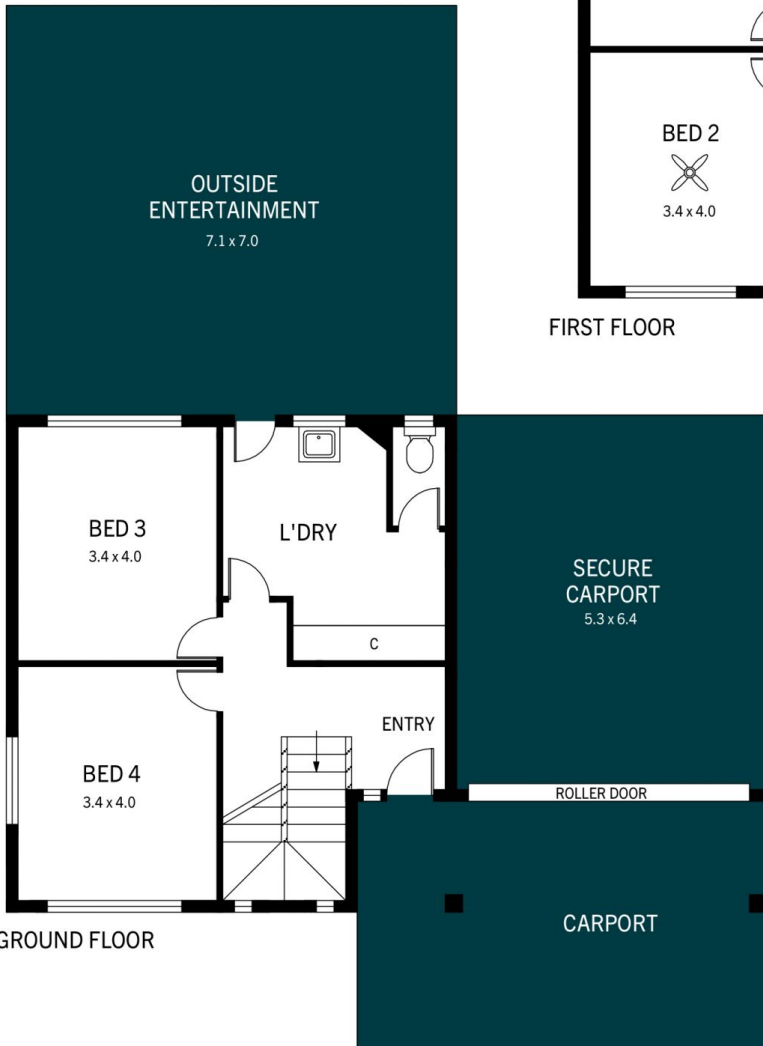
PO Box 18 Aldinga Beach SA
08 8366 2230



FIRST FLOOR



BALCONY



GROUND FLOOR

4 Zephyr Terrace, Port Willunga

DISCLAIMER: Floorplan and area calculation are approximate and for illustration purposes only.
Produced by **Property Portraits**

MAGAIN