

# MAGAIN



## 15 Brisbane Drive Salisbury Heights SA

4  2  2 

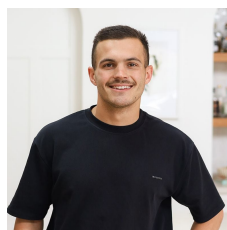
Positioned in the ever-popular Salisbury Heights, this beautifully maintained four-bedroom residence delivers an ideal blend of comfort, functionality, and relaxed family living. With a thoughtful layout and a host of practical features, this home is perfectly suited to growing families or those seeking a move-in-ready opportunity in a well-connected location.

The spacious master suite offers a peaceful retreat, complete with built-in robes, ceiling fan, and a private ensuite. The remaining three bedrooms are all generously sized and include built-in wardrobes, with bedrooms two and three also featuring ceiling fans for added comfort.

At the heart of the home, the well-appointed kitchen is

[For full version visit the website](https://www.magain.com.au/property/15-brisbane-drive-salisbury-heights-sa/8692243)

**Type** : House  
**Price** : \$949k - \$999k  
**Land Size** : 647 sqm  
**View** : <https://www.magain.com.au/property/15-brisbane-drive-salisbury-heights-sa/8692243>



**Bailey Fielke**  
08 8522 2715



**Grant Fielke**  
08 8522 2715

15 Brisbane Drive,  
SALISBURY HEIGHTS



Living:	167.20SQM
Verandah:	64.20SQM
Garage:	32.50SQM
Shed:	8.20SQM
<b>TOTAL:</b>	<b>272.10SQM</b>

This drawing is for illustration purposes only. All measurements are internal and approximate. Details intended to be relied upon should be independently verified.

