

MAGAIN



30 Moseley Street Glenelg SA

4 🛏 4 🚿 4 🚗

Sometimes, you step into a home and feel an immediate, undeniable sense of belonging - where generations have lived, laughter has echoed, and memories are etched into every wall. 30 Moseley Street is one of those homes and an address to be proud of.

Positioned on over 900sqm along tightly held and iconic Moseley Street, this grand 1920s residence offers not just a home, but a lifestyle - just a short stroll to Jetty Road Glenelg and approximately 300 metres from the pristine shoreline of Glenelg Beach.

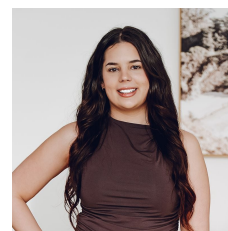
Beyond the secure rendered frontage, an electric gate reveals beautifully established gardens, lush lawns, and a charming wrap-around verandah - a first impression rich in

[For full version visit the website](https://www.magain.com.au/property/30-moseley-street-glenelg-sa/8698873)

Type : House
Price : Expressions of Interest.
Building Size : 320 sqm
Land Size : 920 sqm
View : <https://www.magain.com.au/property/30-moseley-street-glenelg-sa/8698873>



Sandy Robinson
08 8398 1494



Nina Bartholomew
08 8398 1494



Internal	319	SQM
External	204	SQM
Total Approx	523	SQM



Scale In Metres. This Drawing Is For Illustration Purposes Only. All Measurements Are Approximate And Details Intended To Be Relied Upon Should Be Independently Verified. All Measurements Are Approximate.