

MAGAIN



1 Whitford Rd Elizabeth South SA

3  1  2 

!AVAILABLE NOW!

The Fresh Start You've Been Waiting For Step into a home that feels brand new. Located at the gateway of Elizabeth South, 1 Whitford Road has been meticulously updated to offer a bright, modern, and outdoor friendly lifestyle. With a crisp, neutral color palette and high-quality finishes, this is a property you'll be proud to call home.

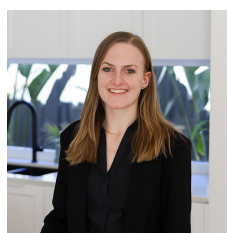
KEY FEATURES:

- > Three Spacious Bedrooms: Plenty of room for the whole family or a dedicated home office.
- > Freshly Renovated: Brand new paint throughout and updated flooring for a clean, contemporary feel.
- > Light & Airy: Large windows invite natural light into the

Type : House

Price : \$ 515 per week

View : <https://www.magain.com.au/property/1-whitford-rd-elizabeth-south-sa/8702634>



Nadine Stenzel
0405518477

[For full version visit the website](https://www.magain.com.au)

<https://www.magain.com.au>
Magain Real Estate

104 Payneham Road Stepney SA
08 8212 5899



Scale in metres. This drawing is for illustration purposes only. All measurements are approximate and details intended to be relied upon should be independently verified.

Produced by **The Fotobase Group**