

MAGAIN



2 Protea Street Morphett Vale SA

4  1  5 

Positioned on a generous approx. 700sqm corner allotment, 2 Protea Street, Morphett Vale is a well-presented home offering plenty of space, practicality and lifestyle appeal for families, first-home buyers and investors alike.

Inside, the home provides four comfortable bedrooms, all with built-in robes, along with two separate living areas that give the household room to spread out. The renovated kitchen and bathroom add modern appeal, while the spacious dining area, breakfast bar, dishwasher, downlights, great storage and reverse-cycle heating and cooling make everyday living easy. New carpet was also installed throughout in August 2022.

Type : House
Price : Contact Agent
Land Size : 700 sqm
View : <https://www.magain.com.au/property/2-prot-ea-street-morphett-vale-sa/8702991>

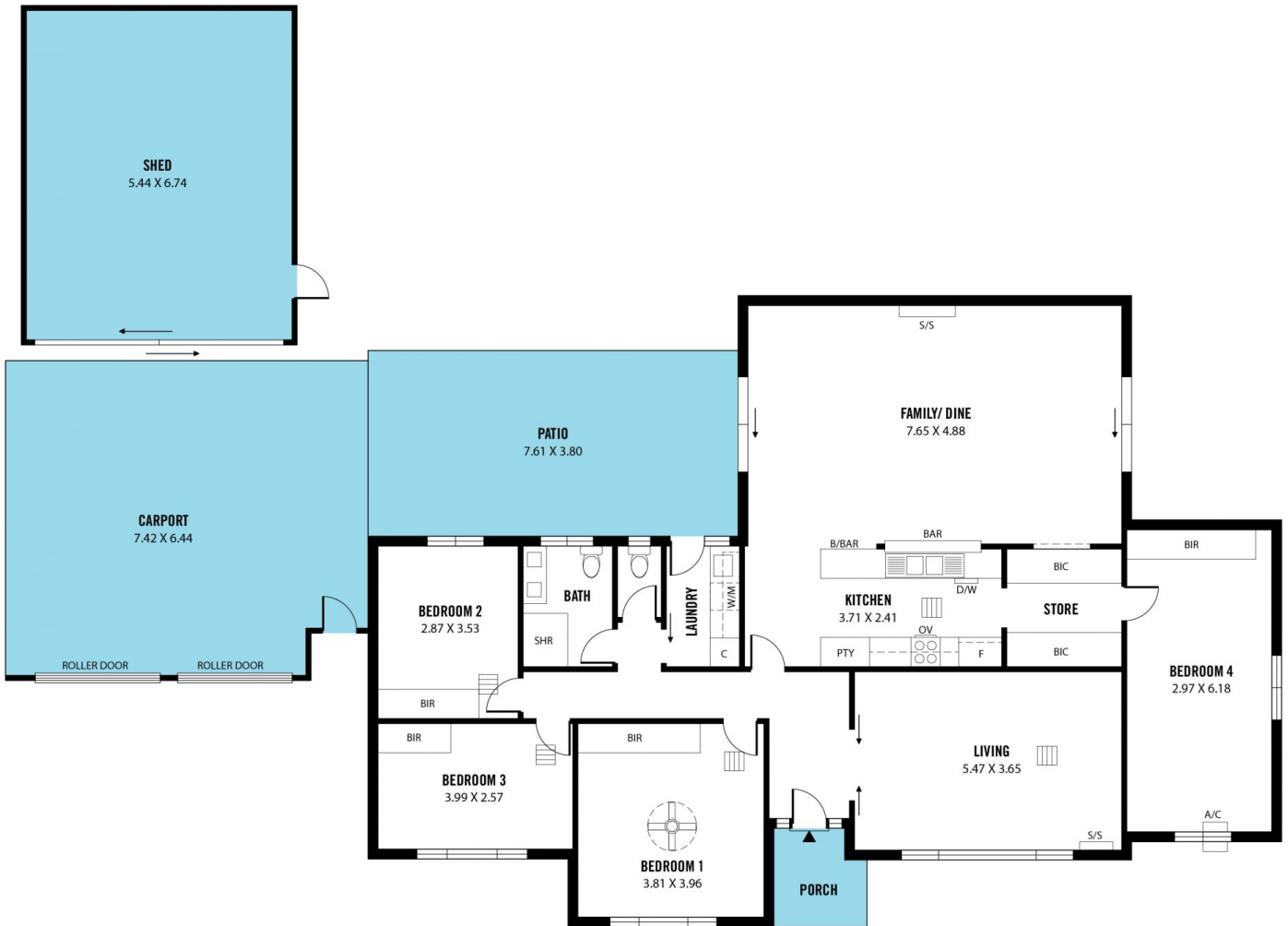


Craig Thomson
08 8366 2292

[For full version visit the website](https://www.magain.com.au)

<https://www.magain.com.au>
Magain Real Estate

52 Hillier Road Morphett Vale SA
08 8366 2292



Scale in metres. This drawing is for illustration purposes only. All measurements are approximate and details intended to be relied upon should be independently verified.

Produced by **The Fotobase Group**