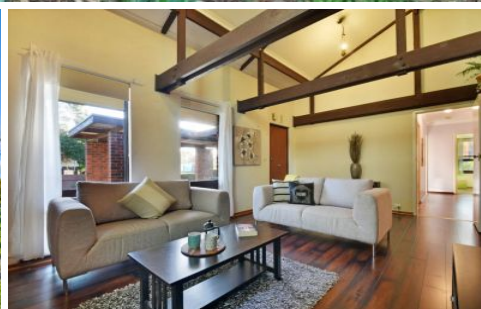


# MAGAIN



## 27 Suffolk Drive Morphett Vale SA

3 1 1

Set in a convenient Morphett Vale location, 27 Suffolk Drive offers a fantastic opportunity for first-home buyers, families, investors or those looking for a home with character, space and future potential.

The home features three bedrooms, a spacious lounge, separate dining area, central kitchen, bathroom and laundry. Full of warmth and charm, the home showcases striking raked ceilings, exposed beams, feature brickwork and large windows that bring in plenty of natural light. The lounge is generous in size and flows through to the dining and kitchen area, creating a practical layout for everyday living.

All three bedrooms are positioned away from the main

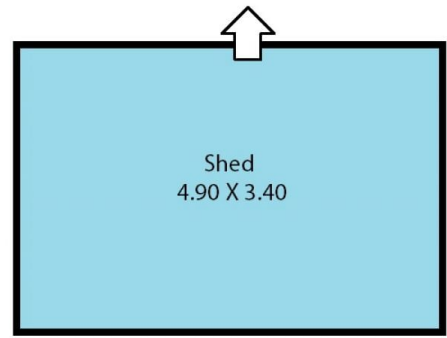
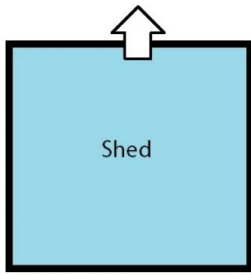
[For full version visit the website](#)

**Type** : House  
**Price** : \$800k - \$850k  
**Building Size** : 107 sqm  
**Land Size** : 686 sqm  
**View** : <https://www.magain.com.au/property/27-suffolk-drive-morphett-vale-sa/8707211>



**Craig Thomson**  
08 8366 2292

27 Suffolk Drive Morphett Vale, South Australia.



**Picture intended as a reference only.** Any specific measurements required should be obtained by an independent surveyor.