

MAGAIN



2/1 Waterfall Terrace Burnside SA

3 2 2

Here is your chance to secure a property in the blue-chip suburb of Burnside. This tastefully updated three-bedroom townhouse calls on the best of the leafy east with stylish ease, making it one to be seriously considered for the savvy investor, creative down-sizer or the ambitious professional who put lifestyle at the top of the wish list.

Large bedrooms and high ceilings are the call of the day here at Waterfall Terrace. Updated with plantation shutters throughout and two bathrooms for your convenience - townhouse two is not just your average Jo! Two private undercover car parks included, get ready to sit back and listen to the kookaburras laugh at the passes by on your own private balcony as you recover from doing the ever-popular Waterfall Gully trek.

Type : Townhouse
Price : Contact Agent
View : <https://www.magain.com.au/property/21-waterfall-terrace-burnside-sa/8711516>

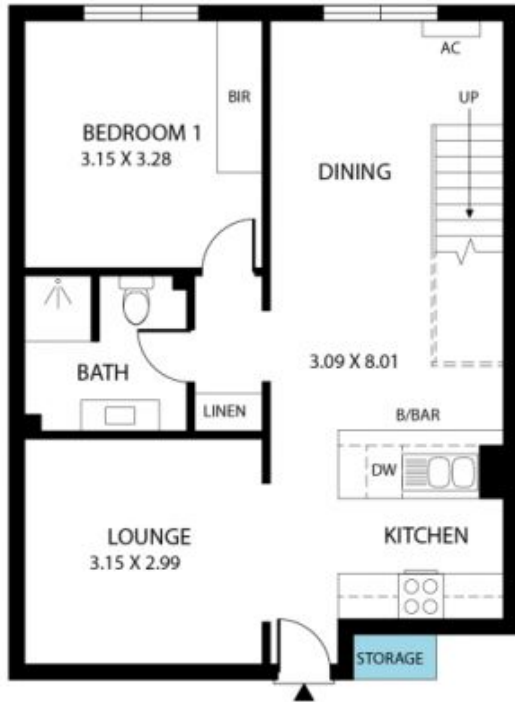


Steve Krause
08 8294 4111

[For full version visit the website](https://www.magain.com.au)

<https://www.magain.com.au>
Magain Real Estate

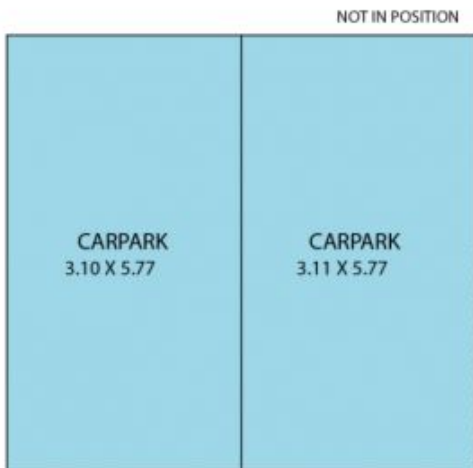
74 Brighton Road Glenelg East SA
08 8294 4111



LOWER LEVEL



UPPER LEVEL



Scale in metres. This drawing is for illustration purposes only. All measurements are approximate and details intended to be relied upon should be independently verified.

Produced by **The Fotobase Group**