

MAGAIN



4/222 Pimpala Road Woodcroft SA

5  3  3 

Let's be honest - finding a 5-bedroom, 3-bathroom home in Woodcroft is rare. Finding one as a townhouse, with the space of a full-sized family home but without the full-sized family home price tag? That's almost unheard of.

This is the property that breaks the rules.

Two storeys of light-filled, contemporary living. Soaring 2.7m ceilings downstairs. Floating floorboards. And a floor plan so flexible it adapts to whatever life throws at it - growing families, multi-generational living, the work-from-home crowd, or investors who recognise a unicorn when they see one.

Five genuinely generous bedrooms anchor the home,

[For full version visit the website](https://www.magain.com.au/property/42-222-pimpala-road-woodcroft-sa/8712450)

Type : Townhouse
Price : Best Offers
Building Size : 282 sqm
Land Size : 268 sqm
View : <https://www.magain.com.au/property/42-222-pimpala-road-woodcroft-sa/8712450>



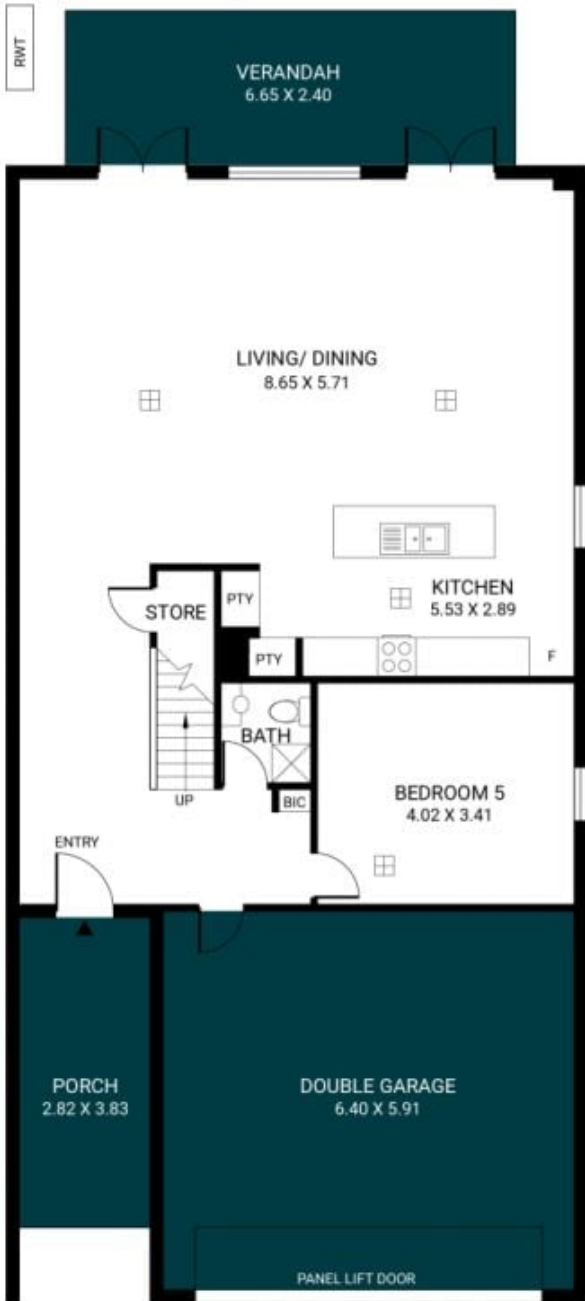
Baz Rampal
08 8381 6000



Zoe Ball
08 8381 6000

<https://www.magain.com.au>
Magain Real Estate

Shop 15, Woodcroft Market Plaza, 217 Pimpala Road W
08 8381 6000



LOWER LEVEL



UPPER LEVEL



Scale in metres. This drawing is for illustration purposes only. All measurements are approximate and details intended to be relied upon should be independently verified.

Produced by **The Fotobase Group**