

# MAGAIN



## 83 Rowley Road Aldinga Beach SA

3  1  2 

Set on a generous 630sqm (approx.) allotment, this well-positioned 1991-built home delivers an appealing blend of everyday convenience, functional living and impressive outdoor versatility. Located within easy walking distance to local shops, schools, public transport and essential amenities, it presents an ideal opportunity for first home buyers, downsizers or those needing secure space for multiple vehicles, while the wide 20m frontage and HDN - Housing Diversity Neighbourhood zoning enhances the property's long-term potential (STCC).

Inside, the home offers a practical and welcoming layout designed for low-maintenance living. Vinyl plank flooring runs seamlessly through both living zones, creating a cohesive and durable finish suited to busy households. The

[For full version visit the website](https://www.magain.com.au/property/83-rowley-road-aldinga-beach-sa/8712928)

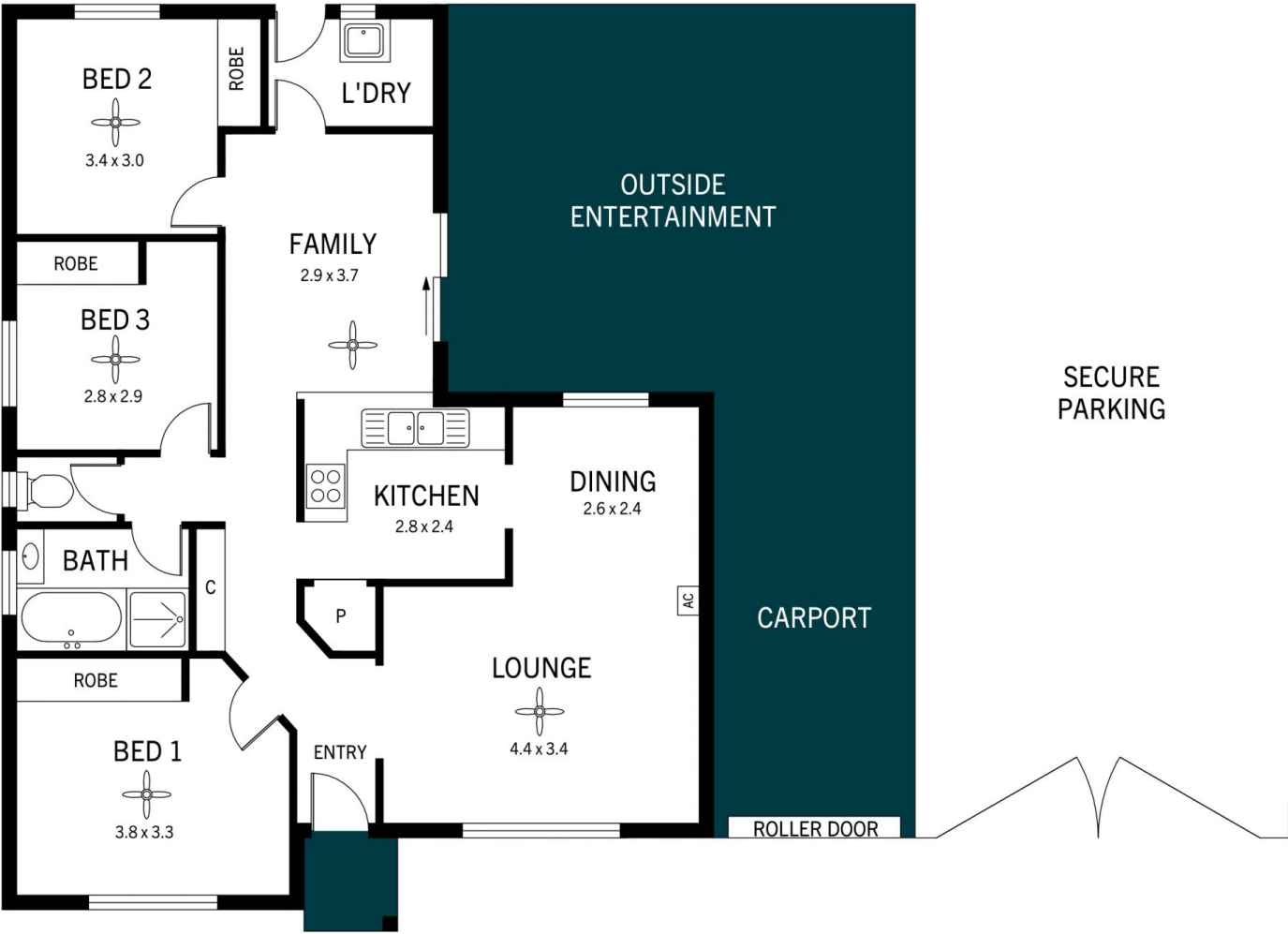
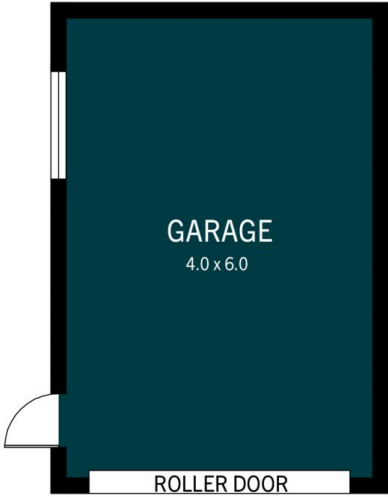
**Type** : House  
**Price** : \$800k - \$850k  
**Building Size** : 108 sqm  
**Land Size** : 630 sqm  
**View** : <https://www.magain.com.au/property/83-rowley-road-aldinga-beach-sa/8712928>



**Jemma Turner**  
08 8366 2230



**Jacqui Wehrmann**  
08 8366 2230



# 83 Rowley Road, Aldinga Beach

DISCLAIMER: Floorplan and area calculation are approximate and for illustration purposes only.  
Produced by **Property Portraits**

# MAGAIN