

MAGAIN



2/46 Main South Road Morphett Vale SA

3  1  1 

Freshly painted throughout and fitted with brand new carpets and curtains, this well presented unit offers a fantastic opportunity for first home buyers, downsizers or investors seeking a move in ready property in a highly convenient location. Positioned at the rear of two units, this home enjoys a quieter and more private setting away from the main road. You'll enjoy easy access to local parks, shopping facilities, public transport, popular pubs and cafes, with the bustling Colonnades Shopping Centre just a short drive away.

One of the standout features of the home is its cleverly reconfigured floorplan. The former garage has been converted into a spacious bedroom, creating valuable additional accommodation while also offering extensive

[For full version visit the website](https://www.magain.com.au)

Type : Unit
Price : Under Contract
Building Size : 100 sqm
Land Size : 308 sqm
View : <https://www.magain.com.au/property/24-6-main-south-road-morphett-vale-sa/8718500>



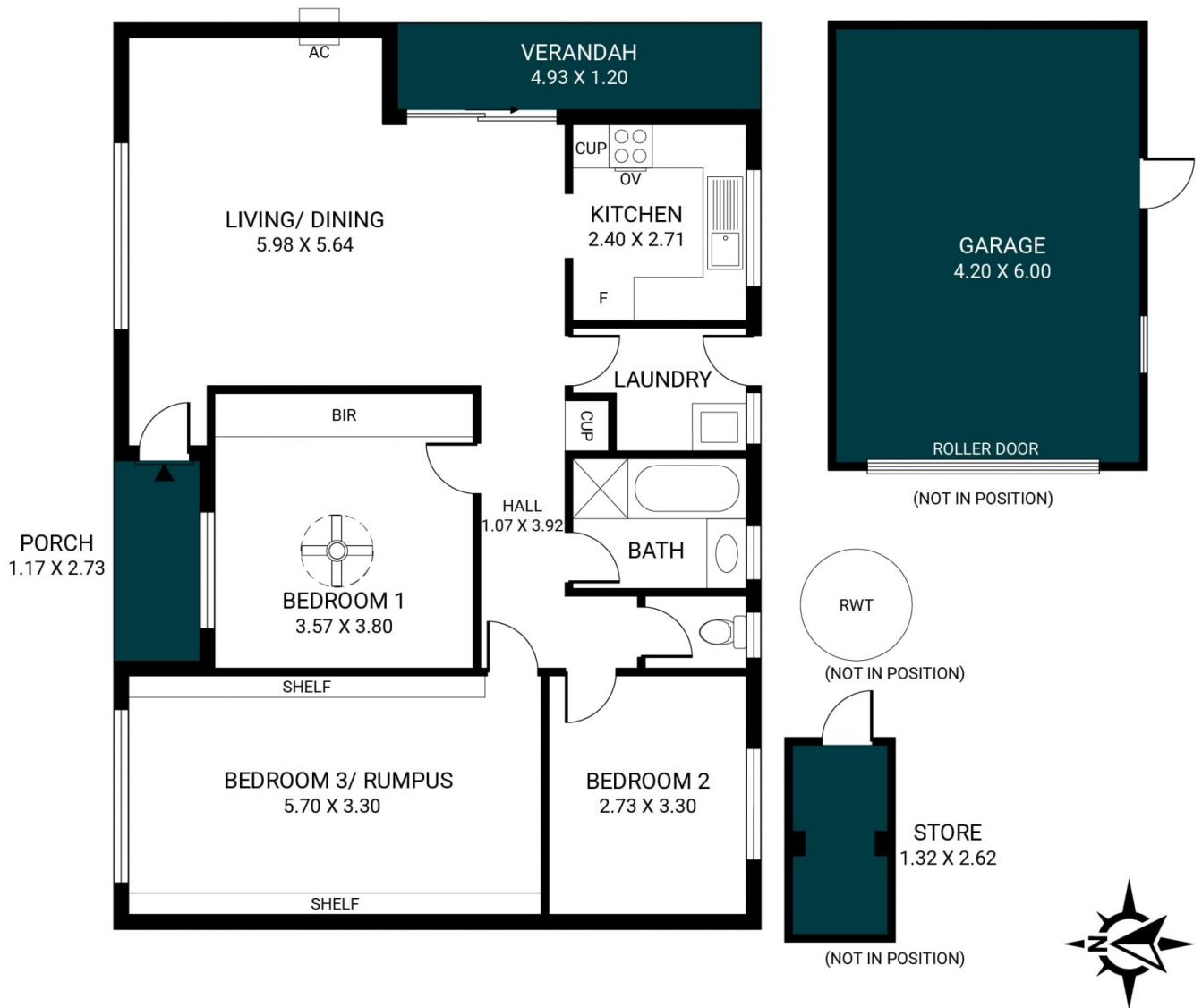
Sam Raven
08 8381 6000



Mike Dobbin
0417 877 210

<https://www.magain.com.au>
Magain Real Estate

Shop 15, Woodcroft Market Plaza, 217 Pimpala Road W
08 8381 6000



Scale in metres. This drawing is for illustration purposes only. All measurements are approximate and details intended to be relied upon should be independently verified.

Produced by **The Fotobase Group**