

MAGAIN



15a Adams Road Sheidow Park SA

3  2  1 

Positioned within one of Adelaide's fastest growing pockets, this Torrens Titled residence built in 2013 presents an exciting opportunity for first home buyers, downsizers, young families and investors alike.

Step inside this well-kept home you are welcomed into a thoughtfully designed layout featuring an open plan living and dining, connected to a kitchen that offers excellent bench space, breakfast bar seating, and ample cabinetry.

Accommodation is well catered for with three bedrooms. The master is positioned privately at the front of the home, complete with walk-in robe, along with its own ensuite. Bedrooms two and three include built-in robes, making both comfortable and practical for family living.

[For full version visit the website](https://www.magain.com.au/property/15a-adams-road-sheidow-park-sa/8719373)

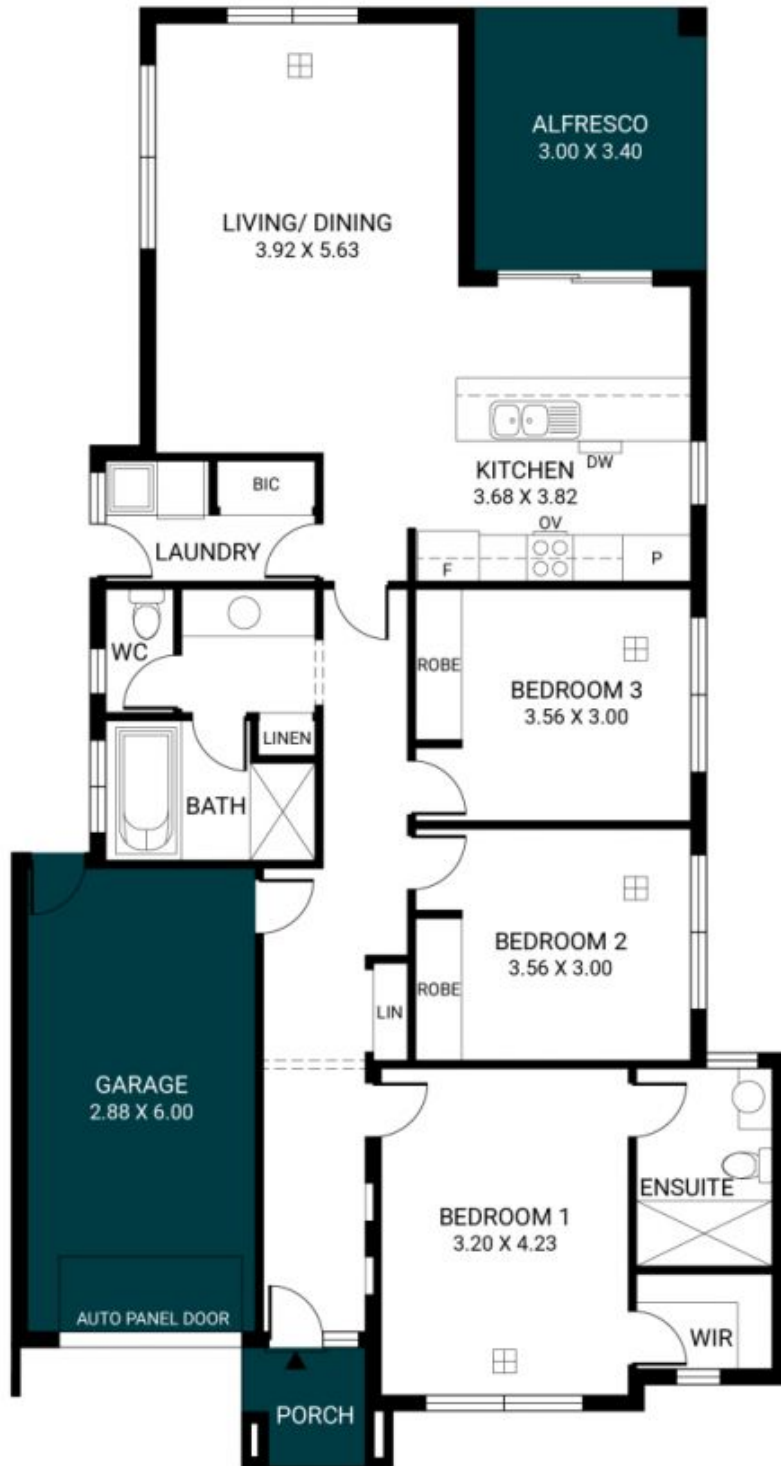
Type : House
Price : \$799k - \$849k
Land Size : 294 sqm
View : <https://www.magain.com.au/property/15a-adams-road-sheidow-park-sa/8719373>



Steve Krause
08 8294 4111



Josh Morrison
08 8294 4111



Scale in metres. This drawing is for illustration purposes only. All measurements are approximate and details intended to be relied upon should be independently verified.

Produced by **The Fotobase Group**