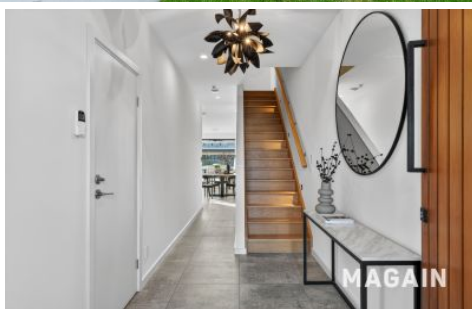
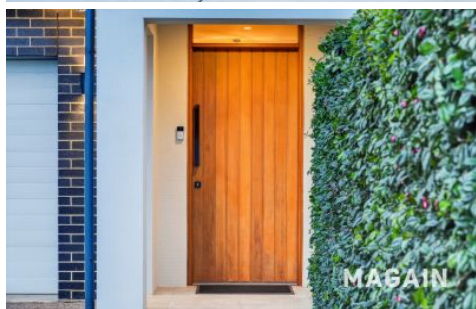


MAGAIN



69A Sunshine Avenue Warradale SA

3  2  4 

Not all homes are created equal.

Meticulously designed, beautifully finished and presented to an exceptional standard, this stunning two-storey residence offers the rare feeling of stepping into a luxury display home while delivering the practicality, flexibility and low-maintenance lifestyle demanded by today's discerning buyers. Every detail has been carefully considered, resulting in a home that feels prestigious, sophisticated and effortlessly liveable.

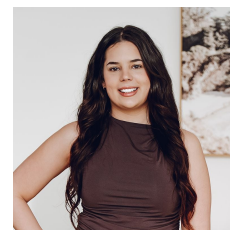
Positioned on highly sought-after Sunshine Avenue, the location is every bit as impressive as the home itself. Perfectly situated between the expansive green spaces of Brighton's Football, Lacrosse and Rugby Ovals, Brighton Primary School and the convenience of Westfield Marion, families will appreciate having quality schooling, medical

[For full version visit the website](https://www.magain.com.au)

Type : House
Price : Offers by Wed 24th June (Unless Sold Prior)
Building Size : 263 sqm
Land Size : 383 sqm
View : <https://www.magain.com.au/property/69-a-sunshine-avenue-warradale-sa/8721079>



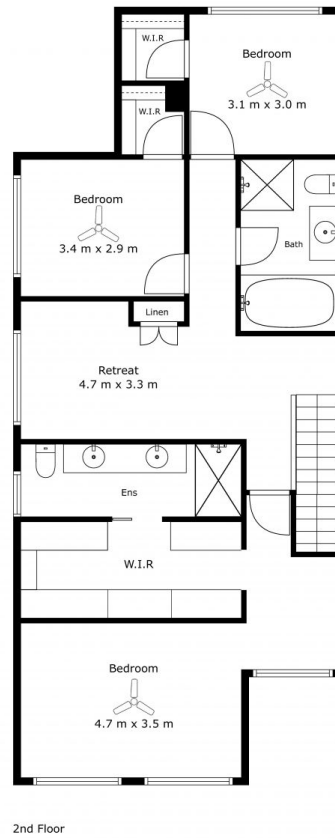
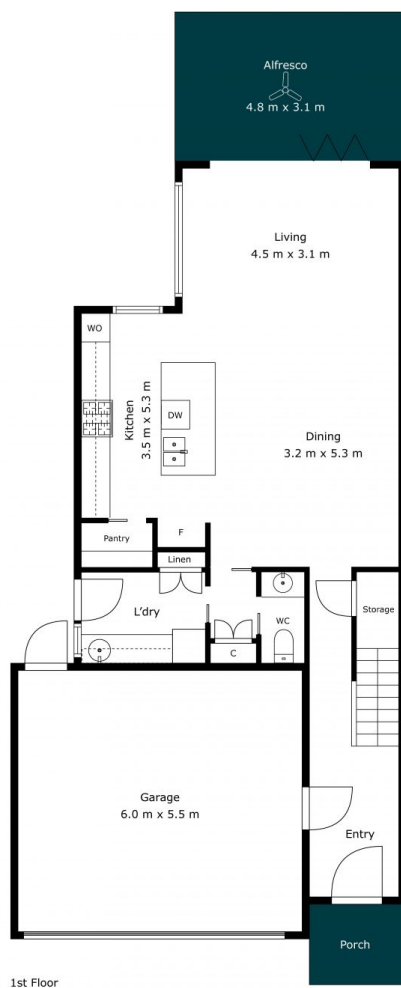
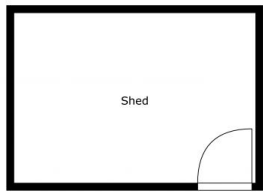
Sandy Robinson



Nina Bartholomew

<https://www.magain.com.au>
Magain Real Estate

T17, 525 Brighton Road Brighton SA
08 8398 1494



Internal (inc garage)	241	SQM
External	22	SQM
Total Approx	263	SQM



Scale In Metres. This Drawing Is For Illustration Purposes Only. All Measurements Are Approximate And Details Intended To Be Relied Upon Should Be Independently Verified. All Measurements Are Approximate.