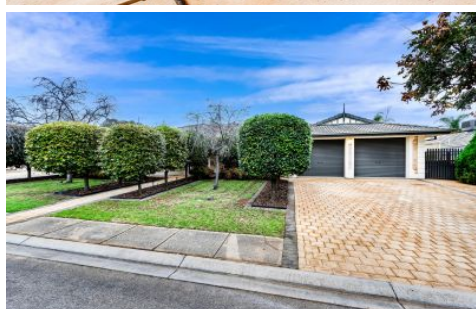


# MAGAIN



## 6 Ledgard Road Evanston Park SA

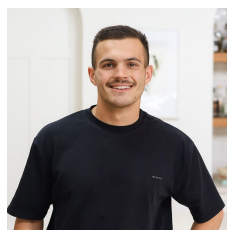
5 🛏 2 🚿 2 🚗

Positioned in the highly sought-after suburb of Evanston Park, this beautifully presented five-bedroom family home offers generous living spaces, quality features, and an impressive outdoor lifestyle perfect for growing families.

From the attractive sandstone frontage and plantation shutters to the front of the home, this property delivers outstanding street appeal.

Inside, you'll find a spacious and versatile floorplan featuring a formal lounge and dining room, a large family kitchen complete with a walk-in pantry and dishwasher, and a separate rumpus room providing additional living and entertaining space.

**Type** : House  
**Price** : \$939k to \$979k  
**Land Size** : 695 sqm  
**View** : <https://www.magain.com.au/property/6-ledgard-road-evanston-park-sa/8728345>



**Bailey Fielke**  
08 8522 2715



**Grant Fielke**  
08 8522 2715

[For full version visit the website](https://www.magain.com.au)

<https://www.magain.com.au>  
Magain Real Estate

32 Adelaide Road Gawler South SA  
08 8522 2715

6 Ledgard Road,  
**EVANSTON PARK**



Living: 195.74SQ.M  
 Garage: 35.70SQ.M  
 Verandah: 18.15SQ.M  
 Pergola: 149.81SQ.M  
 Shed: 5.40SQ.M

**TOTAL: 404.80SQ.M**

This drawing is for illustration purposes only. All measurements are internal and approximate. Details intended to be relied upon should be independently verified.

