

# MAGAIN



## 133 Elizabeth Road Morphett Vale SA

3 2 6

Perfectly positioned in a convenient pocket of Morphett Vale, this well-equipped family home offers a fantastic combination of lifestyle, space and practicality. With three bedrooms, two bathrooms, a sparkling pool, outdoor entertaining area and an impressive six-car capacity, this is a property that delivers flexibility for families, tradies, car enthusiasts or those simply needing extra room.

Step inside and enjoy a functional layout designed for comfortable everyday living. The home offers plenty of space for the family to spread out, while the outdoor areas are ideal for entertaining, relaxing by the pool or making the most of South Australian summers.

Set close to local shops, schools and public transport, the

[For full version visit the website](https://www.magain.com.au/property/133-elizabeth-road-morphett-vale-sa/8728904)

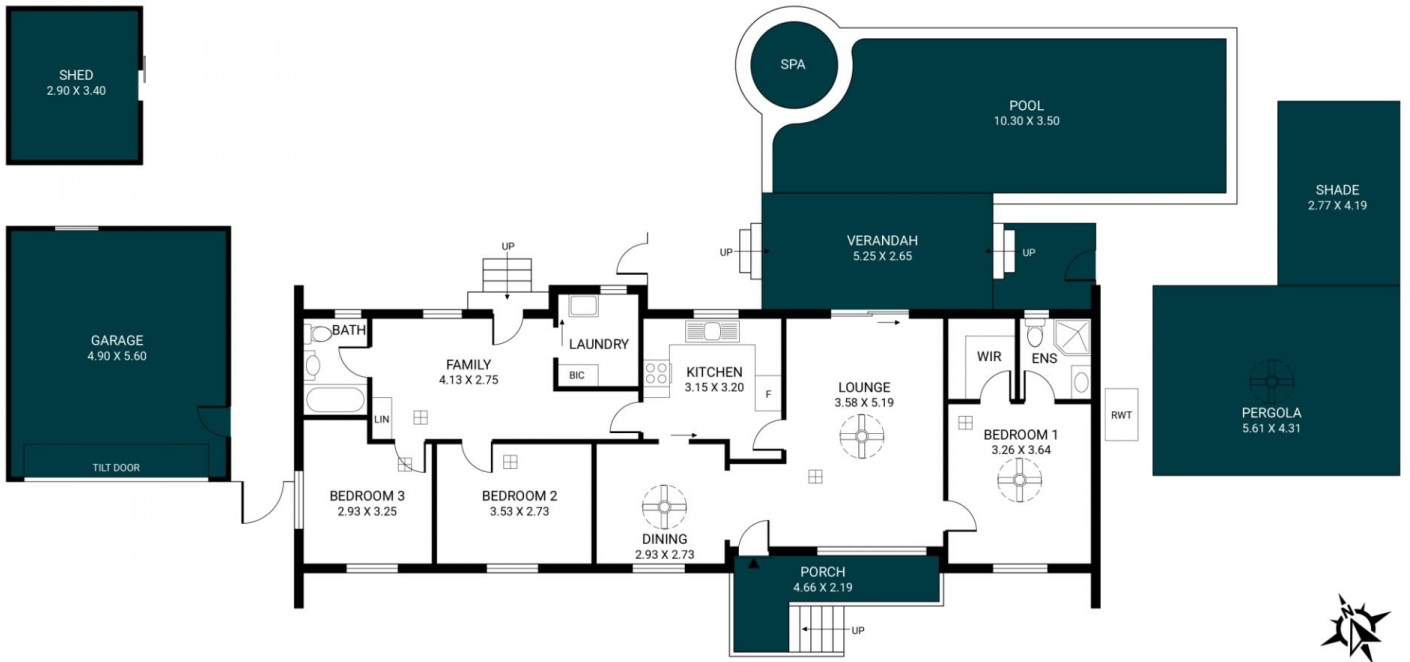
**Type** : House  
**Price** : \$849k - \$899k  
**Building Size** : 114 sqm  
**Land Size** : 777 sqm  
**View** : <https://www.magain.com.au/property/133-elizabeth-road-morphett-vale-sa/8728904>



**Craig Thomson**  
08 8366 2292

<https://www.magain.com.au>  
Magain Real Estate

52 Hillier Road Morphett Vale SA  
08 8366 2292



Scale in metres. This drawing is for illustration purposes only. All measurements are approximate and details intended to be relied upon should be independently verified.

Produced by **The Fotobase Group**