

MAGAIN



20 Richards Drive Morphett Vale SA

5  3  2 

Perfectly positioned in a convenient pocket of Morphett Vale, this impressive and versatile property offers a rare combination of space, flexibility and lifestyle appeal. With five bedrooms, three bathrooms, multiple living areas, a detached rear accommodation zone, rumpus room, shed and generous outdoor entertaining, this is a home designed to adapt to growing families, blended households, investors or those needing extra room to spread out.

The main residence provides a practical and comfortable layout, featuring three bedrooms, including a main bedroom with walk-in robe and ensuite, a central bathroom, spacious lounge, open-plan living area and a well-positioned kitchen and dining zone. The large verandah creates an inviting outdoor space, ideal for

[For full version visit the website](https://www.magain.com.au)

Type : House
Price : \$930k - \$950k
Building Size : 128 sqm
Land Size : 866 sqm
View : <https://www.magain.com.au/property/20-richards-drive-morphett-vale-sa/8728984>



Craig Thomson
08 8366 2292

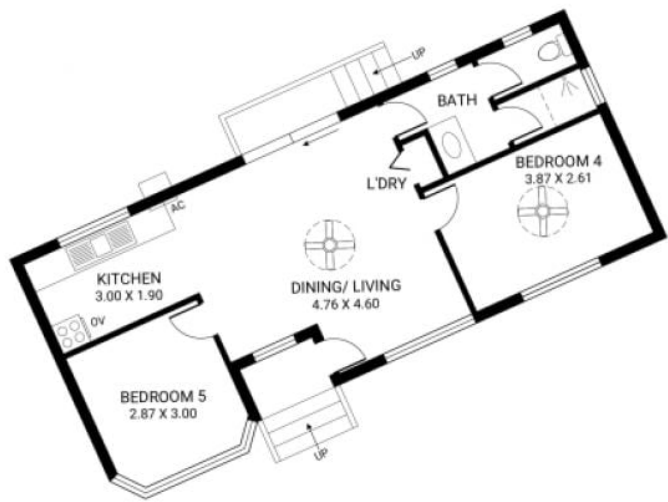
<https://www.magain.com.au>
Magain Real Estate

52 Hillier Road Morphett Vale SA
08 8366 2292



Scale in metres. This drawing is for illustration purposes only. All measurements are approximate and details intended to be relied upon should be independently verified.

Produced by **The Fotobase Group**



SHED
2.20 X 3.40

