

MAGAIN



302/293 Fullarton Road Parkside SA

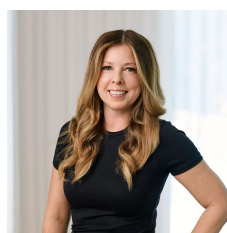
2 2 2

Perfectly positioned on Fullarton Road, with stunning hills views, this stylish and well appointed apartment offers an exceptional lifestyle opportunity just moments from the Adelaide CBD. Whether you're searching for a convenient city fringe residence, a lock up and leave lifestyle, or an investment with excellent Airbnb potential, this property delivers flexibility, comfort and location in equal measure.

Upon entry, floating floorboards guide you through the spacious open plan living zones, creating a warm and contemporary feel throughout. The modern kitchen is both functional and attractive, featuring sleek push to open cabinetry, ample storage, a Miele dishwasher, gas cooktop, a striking pendant light that adds character above the breakfast bar, plus strip under bench lighting. Additional

Type : Apartment
Price : \$885k - \$905k
Building Size : 80 sqm
View : <https://www.magain.com.au/property/302293-fullarton-road-parkside-sa/8729934>

[For full version visit the website](#)



Zoe Ball
08 8381 6000



Sam Raven
08 8381 6000

<https://www.magain.com.au>
Magain Real Estate

Shop 15, Woodcroft Market Plaza, 217 Pimpala Road W
08 8381 6000



Scale in metres. This drawing is for illustration purposes only. All measurements are approximate and details intended to be relied upon should be independently verified.

Produced by **The Fotobase Group**