

MAGAIN



17 Rees Street Sheidow Park SA

3 1 2

Positioned in a peaceful, tightly held pocket of Sheidow Park, this charming 3-bedroom home invites you into a lifestyle where comfort meets opportunity. Set proudly on the high side of the street, capturing sweeping easterly sunrises over the Southern Vales and hills, this home delivers instant street appeal with manicured gardens and a welcoming façade. Brimming with warmth, space and future potential, it's perfectly suited for young families, savvy investors or buyers ready to add their own personal touch. With everyday essentials, schools and parks just a short stroll away and major hubs like Flinders, Westfield Marion and the CBD all within easy reach, this is a home that truly balances lifestyle, location and long term value.

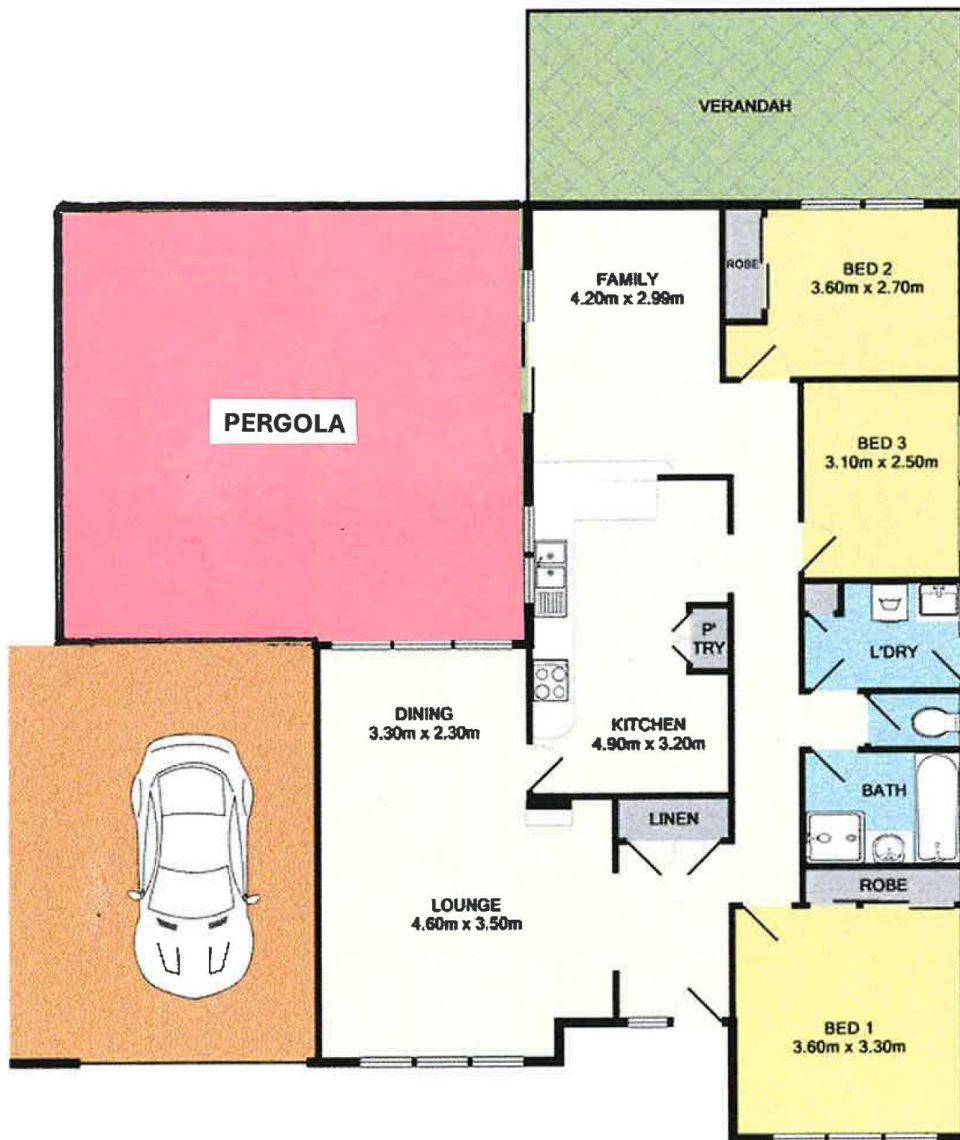
Type : House
Price : Contact Agent (Off-Market)
Building Size : 134 sqm
Land Size : 641 sqm
View : <https://www.magain.com.au/property/17-rees-street-sheidow-park-sa/8731832>



Nathan Brown
08 8398 1494



Lincoln Rogers
08 8398 1494



TOTAL APPROX. FLOOR AREA 208.3 SQ.M (2242 SQ.FT.)

Whilst every attempt has been made to ensure the accuracy of the floor plan contained here, measurements of doors, windows, rooms and any other items are approximate and no responsibility is taken for any error, omission, or mis-statement. This plan is for illustrative purposes only and should be used as such by any prospective purchaser. The fixtures, systems and appliances shown have not been tested and no guarantee as to their operability or efficiency can be given.
Made with Metrapix ©2018