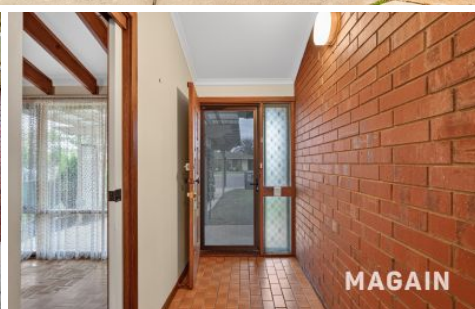


# MAGAIN



27 Jasmine Avenue Marion SA

4 1 2

Tucked away within a quiet cul-de-sac and set on a generous 509sqm (approx.) allotment, this beautifully maintained four-bedroom home offers the perfect blend of space, comfort and lifestyle in the heart of Marion.

From the moment you arrive, the home's established gardens, attractive stonework and welcoming street presence create an immediate sense of warmth. Offering generous accommodation, flexible living options and a wonderful outdoor setting, this is a home ready to be enjoyed today while still offering exciting opportunities to personalise over time.

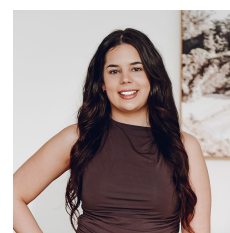
Inside, natural light fills the spacious living and dining areas, creating a welcoming environment for both everyday

[For full version visit the website](https://www.magain.com.au/property/27-jasmine-avenue-marion-sa/8732288)

**Type** : House  
**Price** : AUCTION (USP)  
**Building Size** : 182 sqm  
**Land Size** : 509 sqm  
**View** : <https://www.magain.com.au/property/27-jasmine-avenue-marion-sa/8732288>



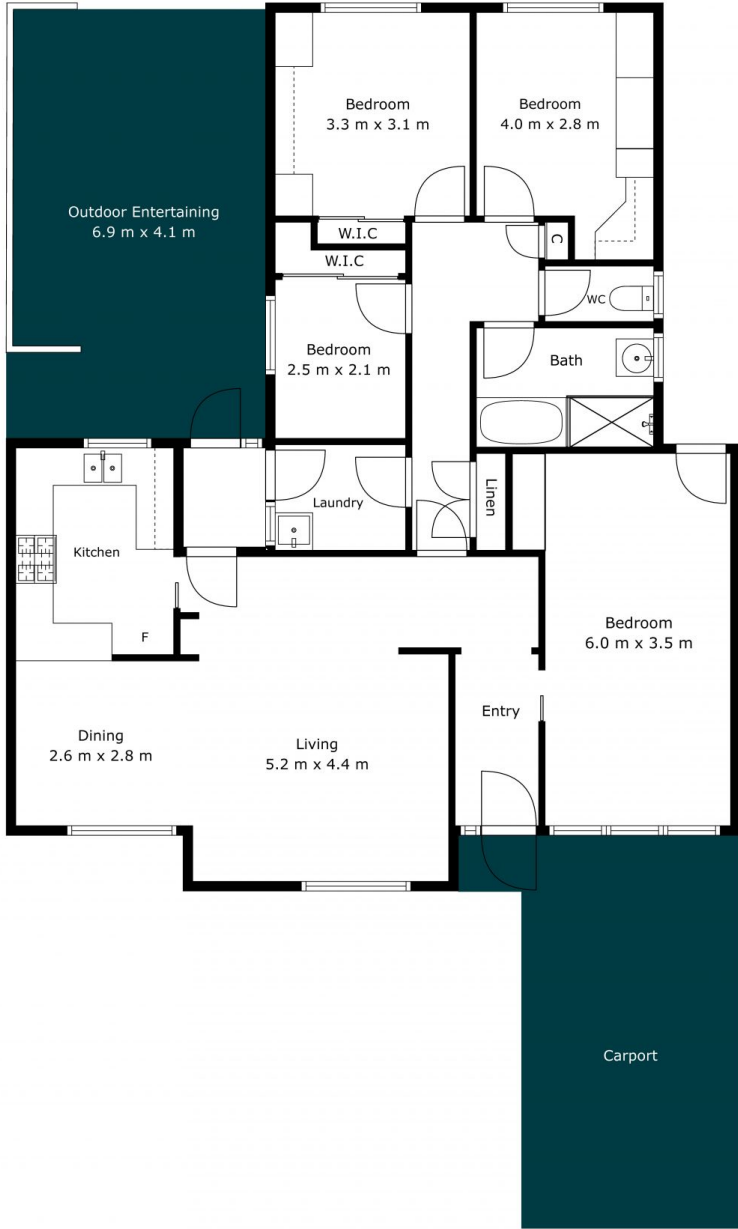
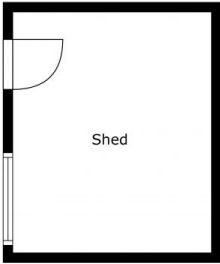
**Sandy Robinson**  
08 8398 1494



**Nina Bartholomew**  
08 8398 1494

<https://www.magain.com.au>  
Magain Real Estate

T17, 525 Brighton Road Brighton SA  
08 8398 1494



Internal	135	SQM
External	47	SQM
Total Approx	182	SQM



Scale In Metres. This Drawing Is For Illustration Purposes Only. All Measurements Are Approximate And Details Intended To Be Relied Upon Should Be Independently Verified. All Measurements Are Approximate.