

# MAGAIN



## 5 Gold Place Sheidow Park SA

3 1 1

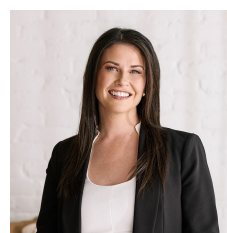
Please contact Danielle Comer for viewing times.

Nestled in a peaceful cul-de-sac within the ever-popular suburb of Sheidow Park, this beautifully presented home offers a fantastic opportunity for first home buyers, downsizers, young families, and investors seeking comfort, convenience, and low-maintenance living. Thoughtfully designed with a practical floorplan and generous living spaces, the home provides everything needed for an easy-care lifestyle in a highly desirable location.

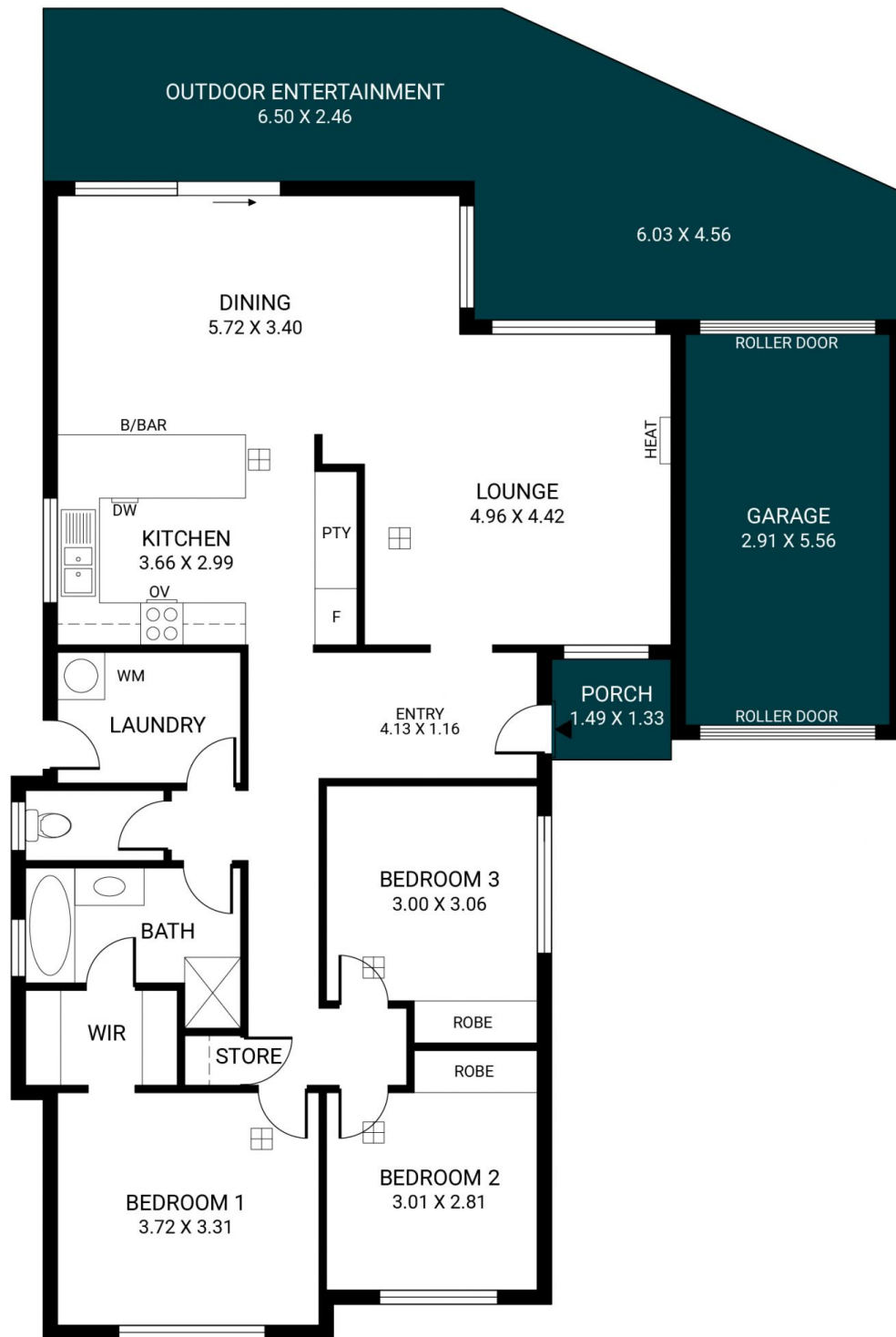
Upon entry, you are welcomed by a handy front storeroom, perfect for additional storage and keeping everyday items neatly tucked away. Flowing through the home, the spacious lounge room offers a comfortable place to relax

[For full version visit the website](https://www.magain.com.au/property/5-gold-place-sheidow-park-sa/8732774)

**Type** : House  
**Price** : \$835k - \$865k  
**Building Size** : 134 sqm  
**Land Size** : 450 sqm  
**View** : <https://www.magain.com.au/property/5-gold-place-sheidow-park-sa/8732774>



**Danielle Comer**  
08 8322 6111



Scale in metres. This drawing is for illustration purposes only. All measurements are approximate and details intended to be relied upon should be independently verified.

Produced by **The Fotobase Group**