

# MAGAIN



## 4 Napier Court Noarlunga Downs SA

4 🛏 2 🚿 1 🚗

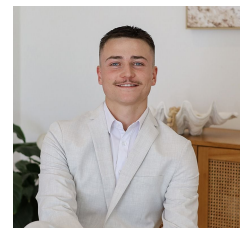
Perfectly presented and ready for a new family to enjoy, all the hard work has been done with this fully renovated home. Set on a huge block with a wide frontage, the property combines modern updates with fantastic outdoor spaces, making it ideal for families and anyone who loves to entertain. With manicured gardens, loads of room for kids and pets, and an impressive outdoor entertaining area, this is a home that is easy to fall in love with.

Step inside and you'll immediately appreciate the light-filled, welcoming feel throughout. Both bathrooms have been fully renovated with stylish finishes, while the sleek modern kitchen has been thoughtfully designed. Featuring induction cooking, a dishwasher, walk-in pantry and an expansive benchtop perfect for baking or meal

**Type** : House  
**Price** : \$829K - \$879K  
**Land Size** : 838 sqm  
**View** : <https://www.magain.com.au/property/4-napier-court-noarlunga-downs-sa/8733150>



**Scott McPharlin**  
08 8382 0029



**Patrick Chay**  
08 8382 0029

[For full version visit the website](https://www.magain.com.au)

<https://www.magain.com.au>  
Magain Real Estate

Shop 2, 32 Saltfleet Street Port Noarlunga SA  
08 8382 0029



## 4 Napier Court, Noarlunga Downs

DISCLAIMER: Floorplan and area calculation are approximate and for illustration purposes only.

Produced by **Property Portraits**

# MAGAIN