

MAGAIN



3/13 Victoria Avenue Camden Park SA

2  1  1 

Stephen Keenihan is proud to present 3/13 Victoria Avenue, Camden Park.

Perfectly positioned in the highly sought-after suburb of Camden Park, this well-maintained two-bedroom unit presents an outstanding opportunity for first-home buyers, downsizers, investors, and those looking to add value through renovation in Adelaide's desirable city-to-coast corridor.

Offering a practical and low-maintenance lifestyle, the home features two generously sized bedrooms, a central bathroom, and a light-filled living area enhanced by a stunning bay window that fills the space with natural light. Designed for comfortable everyday living, the layout

[For full version visit the website](https://www.magain.com.au)

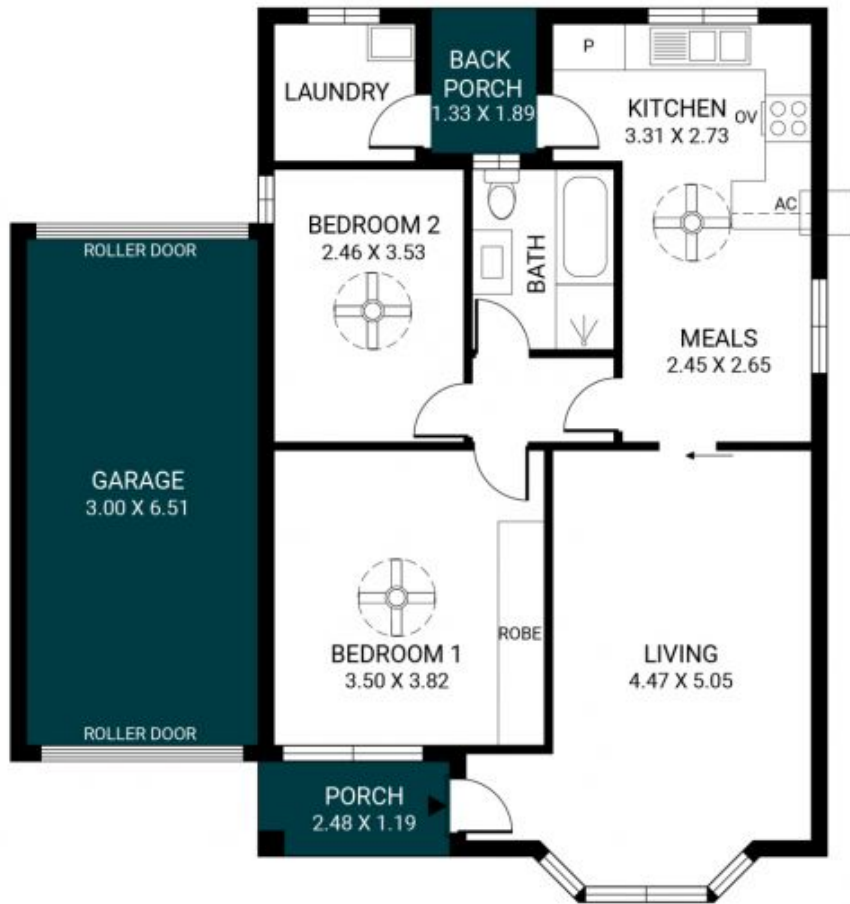
Type : Unit
Price : Best Offer By 13th of July 12pm (USP)
Building Size : 70 sqm
Land Size : 172 sqm
View : <https://www.magain.com.au/property/313-victoria-avenue-camden-park-sa/8734698>



Stephen Keenihan
0415 498 288

<https://www.magain.com.au>
Magain Real Estate

104 Payneham Road Stepney SA
08 8212 5899



Scale in metres. This drawing is for illustration purposes only. All measurements are approximate and details intended to be relied upon should be independently verified.

Produced by **The Fotobase Group**