

MAGAIN



30 Lawrence Avenue Gawler South SA

3 1 2

Perfectly positioned opposite a tree lined reserve and close to public transport, this well-maintained three-bedroom semi-detached home offers comfortable living on a generous 497m² allotment. With practical indoor spaces, neat gardens, and valuable rear access, this property is ideal for first home buyers, downsizers, or investors.

Type : Semi Detached
Price : \$539k-\$569K
Land Size : 497 sqm
View : <https://www.magain.com.au/property/30-lawrence-avenue-gawler-south-sa/8738974>

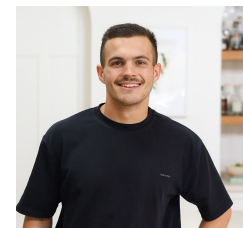
Inside Features:

- Three bedrooms with floating floors
- Separate, light-filled lounge room.
- Functional kitchen with adjoining dining area.
- Floating timber-look floors throughout.
- Practical floorplan with comfortable living spaces.
- Well-presented and ready to move into.

[For full version visit the website](#)



Grant Fielke
08 8522 2715



Bailey Fielke
08 8522 2715

30 Lawrence Avenue,
GAWLER SOUTH

GARDEN
SHED



RWT

SIDE ACCESS



Living:	73.375QM
Porch:	3.565QM
Shed:	3.065QM
TOTAL:	79.995QM

This drawing is for illustration purposes only. All measurements are internal and approximate. Details intended to be relied upon should be independently verified.

