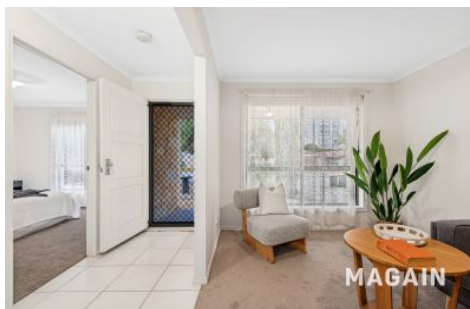


MAGAIN



34 Haseldene Drive Christie Downs SA

2  1  1 

Perfect for downsizers, first home buyers or investors, this neat Torrens Titled courtyard-style home offers a comfortable, low-maintenance lifestyle in a convenient location.

Set behind established, water-wise gardens, the home is neat and tidy, both inside and out. Brand new carpets add a fresh feel, while the practical floorplan includes a cosy front living room, two great-sized bedrooms and a central walk-through bathroom with a bathtub, separate vanity and separate toilet areas.

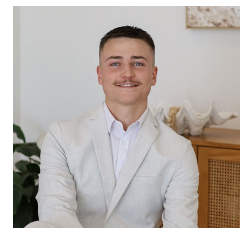
The master bedroom includes a walk-in robe, while the second bedroom has built-in robes. The neat kitchen offers a dishwasher and generous fridge space. It overlooks the

[For full version visit the website](https://www.magain.com.au/property/34-haseldene-drive-christie-downs-sa/8743983)

Type : House
Price : \$649k - \$689k
Land Size : 268 sqm
View : <https://www.magain.com.au/property/34-haseldene-drive-christie-downs-sa/8743983>



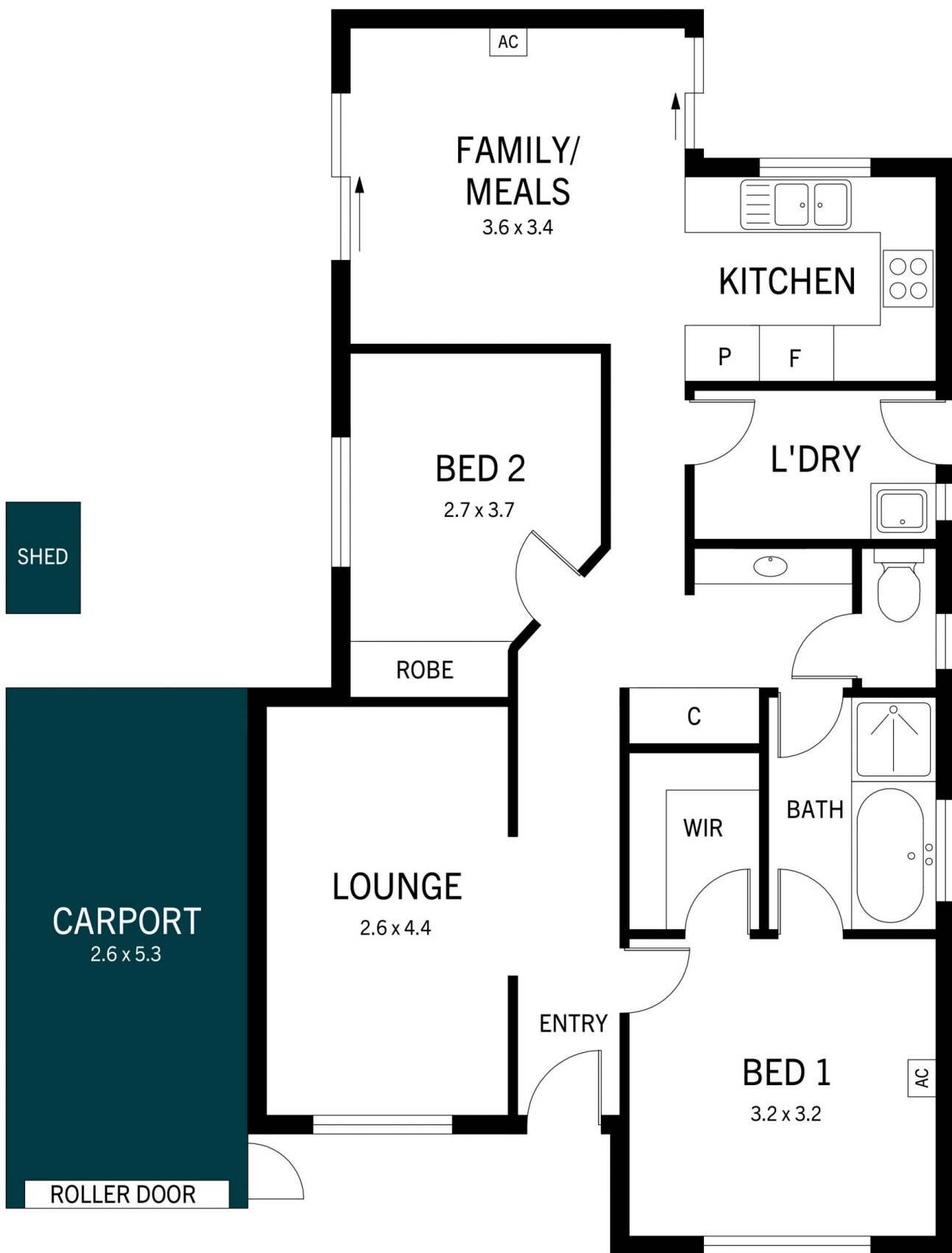
Scott McPharlin
08 8382 0029



Patrick Chay
08 8382 0029

<https://www.magain.com.au>
Magain Real Estate

Shop 2, 32 Saltfleet Street Port Noarlunga SA
08 8382 0029



34 Haseldene Drive, Christie Downs

DISCLAIMER: Floorplan and area calculation are approximate and for illustration purposes only.

Produced by **Property Portraits**

MAGAIN