

MAGAIN



35 Castle Street Reynella SA

3  1  2 

Please contact Robbie Leigh or Levi Sakkas from Magain Real Estate for Further Information.

Set on a generous 693m² (approx.) allotment with an impressive 18.4 metre frontage (approx.), this well-maintained double brick home presents an exceptional opportunity for first home buyers, investors, and developers alike, with exciting subdivision potential (STCC). Nestled in a quiet and peaceful street, the home offers comfortable everyday living while providing scope to further enhance or redevelop in the future.

Inside, the home features three well-proportioned bedrooms, updated main bathroom, and a spacious main living room designed for comfort and relaxation. The

[For full version visit the website](https://www.magain.com.au/property/35-castle-street-reynella-sa/8745244)

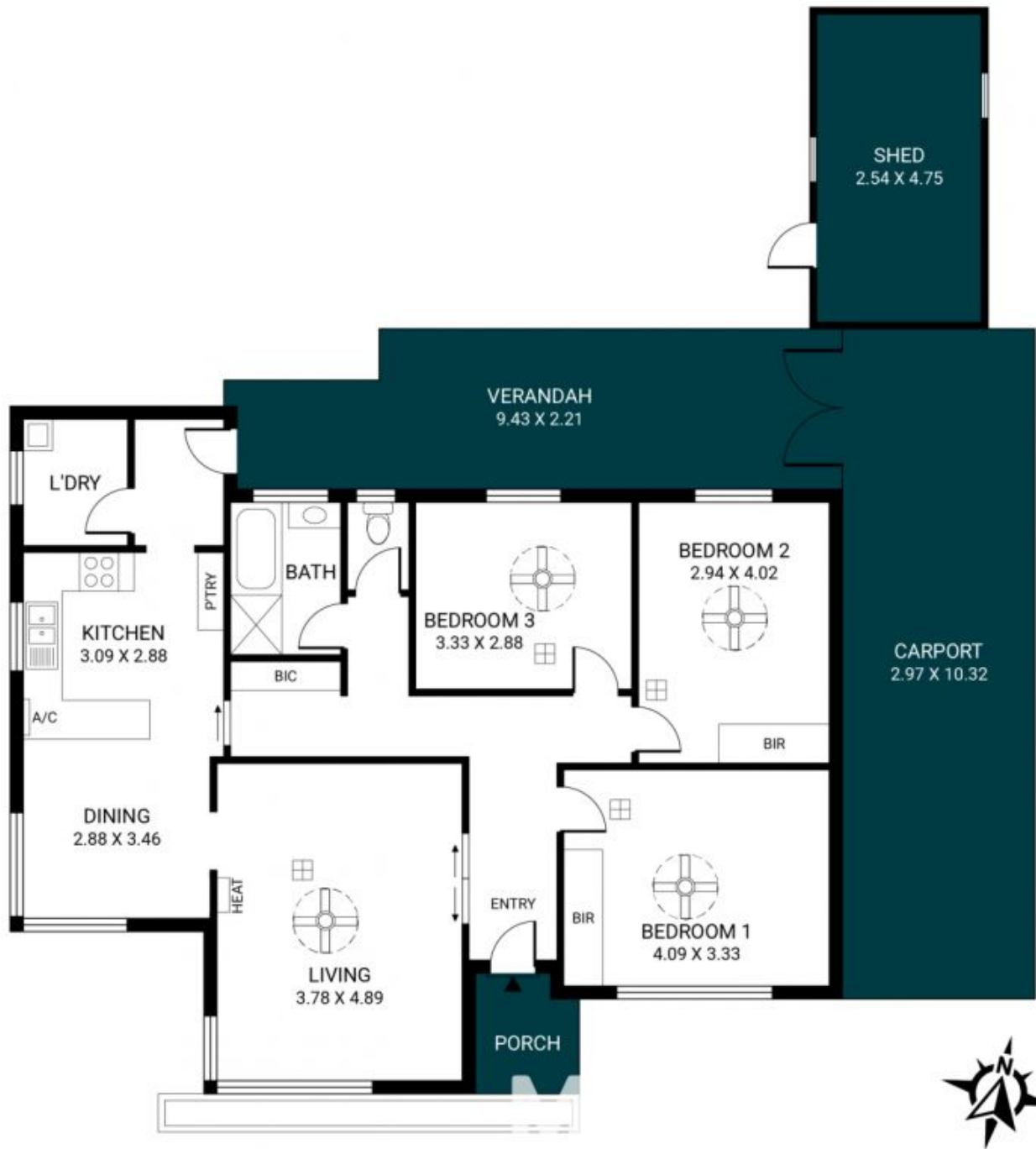
Type : House
Price : \$769k - \$799k
Land Size : 693 sqm
View : <https://www.magain.com.au/property/35-castle-street-reynella-sa/8745244>



Robbie Leigh
08 8366 2292



Levi Sakkas
08 8366 2292



Scale in metres. This drawing is for illustration purposes only. All measurements are approximate and details intended to be relied upon should be independently verified.

Produced by **The Fotobase Group**