

MAGAIN



22 Rothwell Avenue Seaford Meadows SA

4  2  2 

Built in 2017 and presenting beautifully from the street, this stylish home combines a classy rendered façade with a low-maintenance front garden, delivering immediate appeal and easy-care living.

Seaford Meadows is ideally located within close proximity of all of life's necessary amenities. Convenient local shopping precincts nearby, medical facilities, schooling options and quality local parks. Just a short drive to the stunning mid coast beaches while offering easy access via public transport or the Southern Expressway to the Adelaide CBD this location and lifestyle will suit a wide variety of buyers.

A neat entry path leads to the welcoming front porch and

[For full version visit the website](https://www.magain.com.au)

Type : House
Price : \$849k - \$899k
Building Size : 182 sqm
Land Size : 360 sqm
View : <https://www.magain.com.au/property/22-rothwell-avenue-seaford-meadows-sa/8746705>



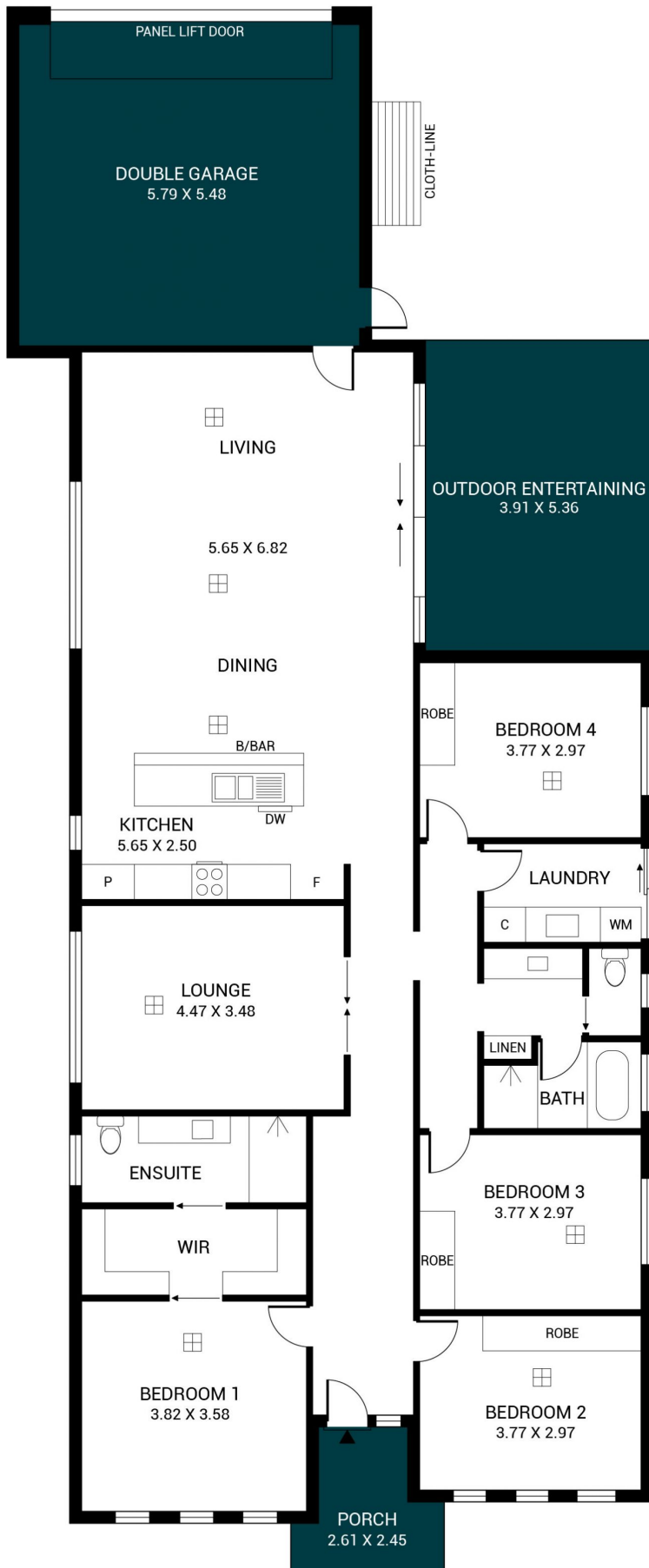
Mitch Portlock
08 8366 2230



David Hams
08 8366 2230

<https://www.magain.com.au>
Magain Real Estate

Shop 60, Seaford Central Shopping Centre, Commercial Road
08 8366 2230



Scale in metres. This drawing is for illustration purposes only. All measurements are approximate and details intended to be relied upon should be independently verified.

Produced by **The Fotobase Group**